



RESEARCH

Open Access

# Food load manipulation ability shapes flight morphology in females of central-place foraging Hymenoptera

Carlo Polidori<sup>1\*</sup>, Angelica Crottini<sup>2</sup>, Lidia Della Venezia<sup>3,5</sup>, Jesús Selfa<sup>4</sup>, Nicola Saino<sup>5</sup> and Diego Rubolini<sup>5</sup>

## Abstract

**Background:** Ecological constraints related to foraging are expected to affect the evolution of morphological traits relevant to food capture, manipulation and transport. Females of central-place foraging Hymenoptera vary in their food load manipulation ability. Bees and social wasps modulate the amount of food taken per foraging trip (in terms of e.g. number of pollen grains or parts of prey), while solitary wasps carry exclusively entire prey items. We hypothesized that the foraging constraints acting on females of the latter species, imposed by the upper limit to the load size they are able to transport in flight, should promote the evolution of a greater load-lifting capacity and manoeuvrability, specifically in terms of greater flight muscle to body mass ratio and lower wing loading.

**Results:** Our comparative study of 28 species confirms that, accounting for shared ancestry, female flight muscle ratio was significantly higher and wing loading lower in species taking entire prey compared to those that are able to modulate load size. Body mass had no effect on flight muscle ratio, though it strongly and negatively co-varied with wing loading. Across species, flight muscle ratio and wing loading were negatively correlated, suggesting coevolution of these traits.

**Conclusions:** Natural selection has led to the coevolution of resource load manipulation ability and morphological traits affecting flying ability with additional loads in females of central-place foraging Hymenoptera. Release from load-carrying constraints related to foraging, which took place with the evolution of food load manipulation ability, has selected against the maintenance of a powerful flight apparatus. This could be the case since investment in flight muscles may have to be traded against other life-history traits, such as reproductive investment.

**Keywords:** Bees, Flight Muscle Ratio, Foraging, Wasps, Wing Loading

## Introduction

Flying animals show a huge diversity of body shapes and structures and, as a consequence, a great variation in flight performance that in turn largely affects the ability to avoid predators, chase mates and carry food items [1-4]. An intriguing question is thus whether variation in flight morphology is adaptively tuned to specific ecological conditions, such as habitat type, or to specific behavioural traits, such as food preferences [5]. Flying animals must generate a lift force sufficient to counteract the gravitational force acting on their bodies, and this requirement is frequently exacerbated when an

additional load has to be carried in flight, which commonly occurs during foraging [6,7]. Load-lifting and manoeuvrability limits may constrain foraging and entail important ecological and evolutionary consequences.

Based on previous theoretical and empirical studies it is possible to make predictions about the relationship between morphology, lift production, power output and take-off ability. Experiments on insects, birds and bats have revealed that flight muscle ratio (i.e., the flight muscle mass to body mass ratio, FMR) is the most important determinant of take-off ability with additional loads [6]. Because flying animals generate an approximately constant force per unit of flight muscle during high-intensity bursts of flight [6], FMR also affects, together with other morphological traits (e.g. position of center of body mass), acceleration and, partly,

\* Correspondence: cpolidori@mncn.csic.es

<sup>1</sup>Departamento de Biodiversidad y Biología Evolutiva, Museo Nacional de Ciencias Naturales (CSIC), C/ José Gutiérrez Abascal 2, 28006 Madrid, Spain  
Full list of author information is available at the end of the article

manoeuvrability in flight (since it could be considered as a series of changes in acceleration) [1,2]. Furthermore, relatively larger wings compared to body size, corresponding to a lower wing loading (WL) (i.e., the body mass to wing area ratio) are also associated with a superior flying ability [2,8]. Animals with lower WL can perform a more energetically efficient flight [9,10] and take off at higher speed (though cruising flight speed increases with WL [11]).

Studies of insects have shown that intraspecific variation in flight morphology also has important fitness consequences: for example, higher FMR in males has been related to a better competitive ability in territorial wasps [12] and dragonflies [1,13]. In a pompilid wasp, competitively successful males are larger, with a tendency for reduced WL [3]. Comparative studies are scarce, but still suggest the same patterns. For example, ant-attended aphid species have higher WL and smaller amount of flight muscles (implying a lower dispersal ability) than non-ant-attended species [14,15]. Similarly, palatable and non-mimetic butterflies have higher FMR, enhancing their escape ability [2]. Interestingly, in both aphids and butterflies, species with reduced flight thorax muscle mass allocate more resources to reproduction (e.g. ovarian size) [2,14,15], suggesting a trade-off between investment in flight muscles and reproduction.

On the whole, these studies indicate that flight morphology in insects is shaped by multiple, potentially contrasting selection pressures, including the ability to defend a territory and the ability to escape from predators, though other sources of selection have not yet been investigated. In particular, despite the known role of foraging behaviour and diet type in shaping the flight morphology of predatory vertebrates [8,16], to the best of our knowledge no study has examined these evolutionary relationships among predatory insects.

Flying, central-place foraging Hymenoptera (Aculeata), whose females repeatedly return with a food load to their nest in order to provision their immature brood, are an excellent system to study the evolutionary relationships between foraging ecology and flight morphology. This diverse group includes bees and wasps and shows huge variation in foraging ecology, as it includes predators hunting arthropods or other animal sources as well as pollen/nectar foragers [17]. Importantly, central-place foraging aculeates vary markedly in their foraging mode: some species, such as bees and social vespid wasps, have evolved the ability to modify the shape and size of food material and thereby the load carried in flight before transporting it to the nest. Bees can tune pollen and nectar load, whereas social vespid wasps often divide large prey in pieces and carry only parts of them on each foraging trip [18,19] (here defined as “able to manipulate” species, AtM species hereafter). In

contrast, solitary vespid wasps and apoid wasps can only hunt and carry entire prey items to provision their brood. These species (here defined as “unable to manipulate” species, UtM species hereafter) should thus select prey weighing less than or equal to the maximum load they can carry in flight [7]. Because wasps able to divide in pieces large prey can successfully return by flying to the nest with food [20], while wasps unable to do this, in the same condition, often fail to forage (though in certain species females would shift to prey dragging over the ground [7]), we hypothesized that inability to modulate load size, rather than the type of food consumed (prey or pollen), should impose foraging constraints to UtM species, and that such constraints should lead to the evolution of a flight morphology that maximizes the ability to carry heavier loads.

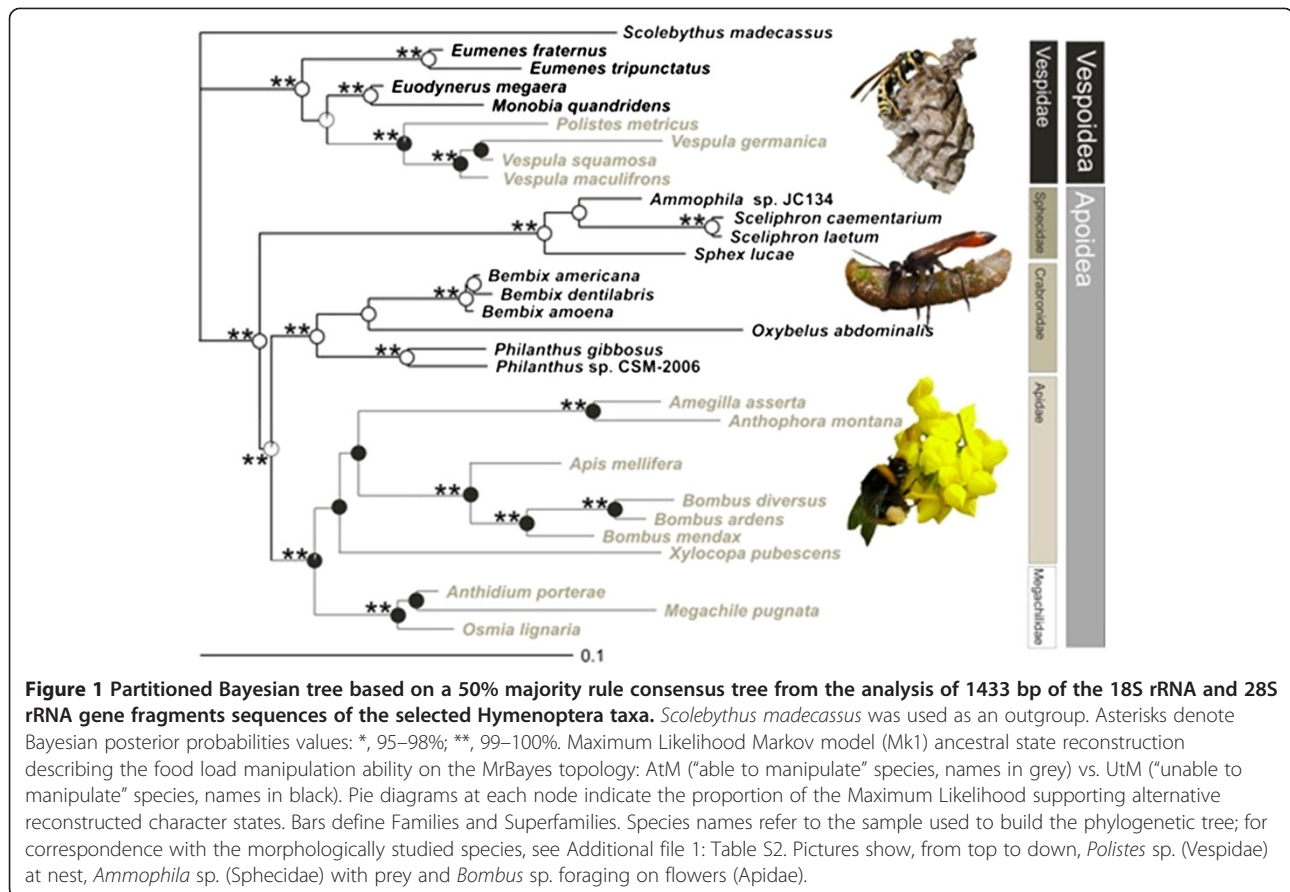
UtM species are predicted to have therefore evolved a higher FMR and a lower WL, unless investment in flight muscles and wing size is counteracted by contrasting selection on other life-history traits, such as reproductive investment. Here we tested the prediction that variation in FMR and WL is associated with food load manipulation ability in central-place foraging Hymenoptera, with UtM species expected to have higher FMR and lower WL than AtM species. Furthermore, across species, we also expected these traits relevant to flight performance to have coevolved, with species having high FMR also having a lower WL.

## Results

The identification of the ancestral state on the reconstructed phylogeny revealed that food manipulation ability is a derived trait for both Apoidea and Vespoidea, with the more primitive species all being unable to manipulate load size (Figure 1). Furthermore, character mapping revealed that food manipulation ability has independently evolved twice in this set of Hymenoptera species, once in Apoidea and the other in Vespoidea (Figure 1).

Our species' sample encompassed a huge range of body masses ( $M_b$ ), from very small species weighing < 0.01 g to very large ones weighing 0.85 g (Table 1). After controlling for phylogeny and body mass, food load manipulation significantly predicted FMR (Table 2). Specifically, AtM-species had smaller FMR than UtM ones (Table 1 and Table 2, Figure 2). Body mass did not covary with FMR, and the estimated value of  $\lambda$  indicated that FMR showed almost no phylogenetic dependence (LR test,  $P = 0.99$ ) (Table 2), suggesting that phylogenetic constraints did not affect the evolution of FMR in this species' set.

The maximum food load that could be theoretically carried in flight by a species ( $Load_{max}$ ) was estimated to range from 0.007 g to over 0.7 g ( $0.14 \pm 0.01$  g on average) (Additional file 1: Table S2). The total load that could be lifted ( $M_{max} = Load_{max} + M_b$ ) ranged from



0.015 g to 1.55 g. In turn, UtM-species were predicted to carry loads weighing  $118 \pm 0.06\%$  of their body mass, while this value was reduced to  $86 \pm 0.06\%$  of body mass in AtM-species (Additional file 1: Table S2).

Wing size ( $A_w$ ) was also very variable among species, with values ranging from less than  $0.1 \text{ cm}^2$  to  $>2 \text{ cm}^2$  (Additional file 1: Table S2). WL was smaller in UtM-species compared to AtM ones, after controlling for phylogeny and body mass (Table 2, Figure 2). In this model, body mass strongly positively covaried with WL (Table 2) (see also Materials and methods), and the degree of phylogenetic dependence was relatively large (0.70, Table 2) and statistically significant (LR test,  $P = 0.011$ ). Thus, differently from FMR, WL showed a high degree of phylogenetic autocorrelation, with closely related species showing more similar WL values than distantly related ones.

Results concerning the effect of food manipulation ability on FMR and WL were qualitatively unaltered if we used FMR and WL values based on dry mass (see Materials and methods) and head width instead of body mass as a covariate, despite the smaller sample of 21 species (Additional file 1: Table S3).

Since in our database all UtM species were arthropod predators, and most AtM species were pollen/nectar feeders (the exception were the few social vespid wasps),

the strict association between dietary specialization (pollen/nectar vs. animal proteins) and food load manipulation ability may have confounded the above results. We therefore conducted an additional analysis of the effect of food manipulation ability on flight traits by excluding all the pollen/nectar feeders (i.e., bees) and restricting the dataset to wasps (including both UtM species,  $n = 14$ , and AtM species,  $n = 4$ ). The analysis was conducted only on FMR, since sample size for WL was too small (only 2 AtM species). Despite the small sample size, the results confirmed the previous analyses, with significantly smaller FMR in the few AtM ( $0.364 \pm 0.008$ ) compared to the UtM species ( $0.407 \pm 0.01$ ) (PGLS model accounting for heterogeneity of variances and body mass; effect of food manipulation ability:  $-0.036 \pm 0.017$ ,  $t_{15} = 2.15$ ,  $P = 0.048$ ,  $\lambda = 0.26$ ; further details not shown for brevity).

The covariation between WL and FMR across species was negative and statistically significant (PGLS model accounting for body mass, FMR estimate:  $-1.27 \pm 0.42$ ,  $t_{20} = -3.03$ ,  $P = 0.007$ ,  $\lambda = 0.82$ ; body mass estimate  $0.34 \pm 0.05$ ,  $t_{20} = 6.43$ ,  $P < 0.001$ ) (Figure 3).

## Discussion

We showed that the evolution of food load manipulation ability, which has occurred independently twice in the

**Table 1 Dataset used for comparative analyses, including wet body mass ( $M_b$ ), flight muscle ratio (FMR), wing loading (WL), dietary specialization (pollen/nectar or animal protein) and food manipulation ability (0 = unable to manipulate food load, 1 = able to manipulate food load)**

Taxonomy	Species	Species used in the phylogenetic reconstruction	Diet	Food manipulation ability	$M_b$ (g)	FMR	WL (g/cm <sup>2</sup> )	Source
Apoidea: Apidae	<i>Amegilla dawsoni</i>	<i>Amegilla asserta</i>	Pollen	1	0.700	-	0.31	[21]
Apoidea: Apidae	<i>Anthophora</i> sp.	<i>Anthophora montana</i>	Pollen	1	0.133	0.396	0.183	This study
Apoidea: Apidae	<i>Apis mellifera</i>	<i>Apis mellifera</i>	Pollen	1	0.094	0.358	0.170	This study
Apoidea: Apidae	<i>Bombus impatiens</i>	<i>Bombus diversus</i>	Pollen	1	0.201	0.261	0.287	[22]
Apoidea: Apidae	<i>Bombus</i> sp. 1	<i>Bombus ardens</i>	Pollen	1	0.208	0.374	0.220	This study
Apoidea: Apidae	<i>Bombus</i> sp. 2	<i>Bombus mendax</i>	Pollen	1	0.204	0.401	0.199	This study
Apoidea: Apidae	<i>Xylocopa varipuncta</i>	<i>Xylocopa pubescens</i>	Pollen	1	0.838	0.342	0.331	[23]
Apoidea: Megachilidae	<i>Anthidium manicatum</i>	<i>Anthidium porterae</i>	Pollen	1	0.154	0.344	0.205	This study
Apoidea: Megachilidae	<i>Megachile rotundata</i>	<i>Megachile pugnata</i>	Pollen	1	0.102	0.32	0.178	This study
Apoidea: Megachilidae	<i>Osmia rufa</i>	<i>Osmia lignaria</i>	Pollen	1	0.187	0.353	0.223	This study
Apoidea: Sphecidae	<i>Ammophila sabulosa</i>	<i>Ammophila</i> sp. JC134	Prey	0	0.026	0.409	0.075	This study
Apoidea: Sphecidae	<i>Sceliphron curvatum</i>	<i>Sceliphron caementarium</i>	Prey	0	0.083	0.46	0.094	This study
Apoidea: Sphecidae	<i>Sceliphron destillatorium</i>	<i>Sceliphron laetum</i>	Prey	0	0.181	0.44	0.124	This study
Apoidea: Sphecidae	<i>Sphex rufocinctus</i>	<i>Sphex lucae</i>	Prey	0	0.118	0.426	0.109	This study
Apoidea: Crabronidae	<i>Bembix olivacea</i>	<i>Bembix americana</i>	Prey	0	0.109	0.46	0.122	This study
Apoidea: Crabronidae	<i>Bembix sinuata</i>	<i>Bembix dentilabris</i>	Prey	0	0.158	0.456	0.195	This study
Apoidea: Crabronidae	<i>Bembix troglodytes</i>	<i>Bembix amoena</i>	Prey	0	0.099	0.36	-	[24]
Apoidea: Crabronidae	<i>Oxybelus</i> sp.	<i>Oxybelus abdominalis</i>	Prey	0	0.008	0.374	0.087	This study
Apoidea: Crabronidae	<i>Philanthus pulchellus</i>	<i>Philanthus gibbosus</i>	Prey	0	0.043	0.392	0.08	This study
Apoidea: Crabronidae	<i>Philanthus triangulum</i>	<i>Philanthus</i> sp. CSM-2006	Prey	0	0.092	0.401	0.116	This study
Vespoidea: Vespidae	<i>Polistes dominulus</i>	<i>Polistes metricus</i>	Prey	1	0.065	0.369	0.085	This study
Vespoidea: Vespidae	<i>Vespula germanica</i>	<i>Vespula germanica</i>	Prey	1	0.067	0.361	-	[20]
Vespoidea: Vespidae	<i>Vespula maculifrons</i>	<i>Vespula maculifrons</i>	Prey	1	0.038	0.381	-	[20]
Vespoidea: Vespidae	<i>Vespula vulgaris</i>	<i>Vespula squamosa</i>	Prey	1	0.078	0.344	0.139	This study
Vespoidea: Vespidae	<i>Eumenes</i> sp. 1	<i>Eumenes fraternus</i>	Prey	0	0.048	0.403	0.078	This study
Vespoidea: Vespidae	<i>Eumenes</i> sp. 2	<i>Eumenes tripunctatus</i>	Prey	0	0.042	0.375	0.098	This study
Vespoidea: Vespidae	<i>Euodynerus</i> sp.	<i>Euodynerus megaera</i>	Prey	0	0.049	0.363	0.067	This study
Vespoidea: Vespidae	<i>Monobia quandidens</i>	<i>Monobia quandidens</i>	Prey	0	0.218	0.385	-	[25]

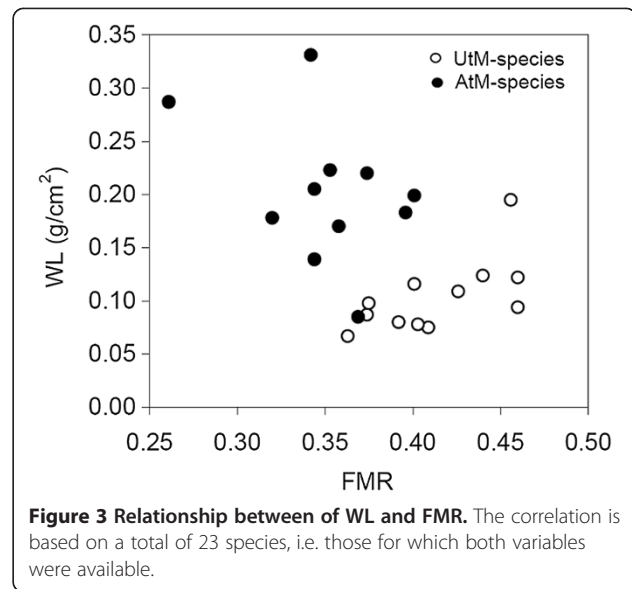
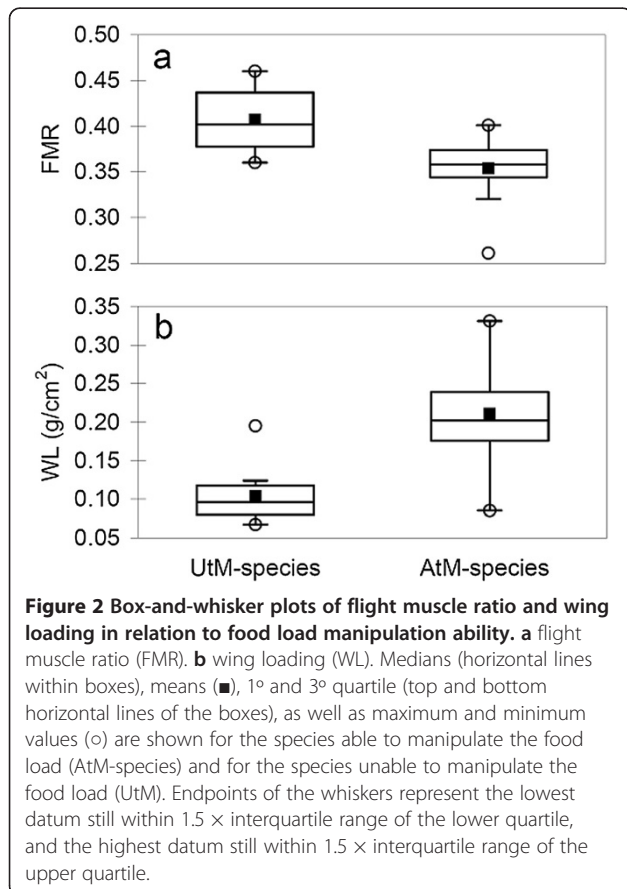
**Table 2 PGLS models testing the effect of food load manipulation ability (0 = UtM; 1 = AtM) on flight muscle ratio (FMR) and (log<sub>10</sub>-transformed) wing-loading (WL), while controlling for wet body mass (log<sub>10</sub>-transformed)**

Model	Estimate (s.e.)	t	P	λ
<i>FMR (n = 27 species)</i>				
Food load manipulation ability	-0.059 (0.016)	-3.71	0.001	0.01
Body mass	0.013 (0.021)	0.64	0.53	
<i>WL (n = 24 species)</i>				
Food load manipulation ability	0.148 (0.059)	2.49	0.021	0.70
Body mass	0.278 (0.053)	5.25	< 0.001	

The maximum likelihood estimate value of λ, assessing the degree of phylogenetic dependence among the tested variables (see Materials and methods), is shown for each model.

present set of species, is associated with a decrease of FMR and an increase in WL across species. Moreover, a high FMR was associated with a low WL, indicating coevolution of morphological traits related to foraging.

Within, as well as across, wasp species, the dependence of the maximum theoretical load that could be carried ( $Load_{max}$ ) on body mass allows larger individuals/species to potentially carry large prey, even though there is no relationship between FMR and body mass (Table 2). Empirical studies of individual wasp species indeed



showed that larger individuals carry larger prey compared to smaller ones [20,25,26]. Moreover, larger species appear to be able to carry heavier loads (Pearson correlation test,  $r = 0.95$ ,  $P < 0.001$ , data from 12 species reviewed by [7]). However, the degree to which individuals and species maximize their food load is highly variable, suggesting that other factors, such as prey specialization [27], prey availability [28] and intra-specific competition [24] may affect the food load mass. For example, females of *Bembix troglodytes*, a solitary wasp of about 0.01 g, hunt for flies weighing only half the theoretical maximum they can carry [24]. This may be a strategy to limit the attack of conspecific kleptoparasitic females, since carrying small prey may allow entering nest holes more rapidly and avoiding harassment [24]. On the other hand, the species-specialist cicada-hunting wasp *Sphecius convallis* carries prey loads approaching the theoretical maximum value of  $Load_{max}$ , possibly because the strong specialization on a single prey species has allowed selection to adjust the morphology of females to an almost ideal size [27].

As re-calculated from data provided in a recent review [7], UtM-species carry on average loads weighing  $89 \pm 14\%$  of body mass (data from 11 species of Sphecidae, Crabronidae and Vespidae), similar to the predicted %  $Load_{max}/M_b$  average value of 118% on the entire set of species considered in this study (89.3% with data for the shared UtM-species in our study and [7],  $n = 7$  species). Moreover, among UtM species, there was no correlation between prey size and FMR (Pearson correlation test,  $r = 0.43$ ,  $P = 0.19$ , data from 11 species reviewed by [7]). It is believed that the first apoid wasps were specialized in hunting large orthopterans, and the prey spectrum would have then become broader to include smaller

arthropods as diverse as flies, bees, beetles and spiders [29]. Thus, the evolution of flight morphology adapted to carry large items possibly preceded, during evolution, prey diversification, and did not change too much thereafter in apoid wasps. A change in flight morphology may have appeared when bees (*sensu stricto*, i.e. pollen/nectar foragers) separated from apoid wasps about 140 to 110 m.y.a. [30]. A similar pattern may have occurred among Vespidae, where solitary species (subfamily Eumeninae), unable to manipulate food load size, are basal to the social species [31], which are able to manipulate food. In Eumeninae, prey diversification was less pronounced, with only lepidopteran or coleopteran larvae used as prey, and a change in flight morphology may have appeared when eusociality, together with its associated foraging mode (e.g. direct liquid-feeding from adult foragers to larvae, made possible because of food manipulation ability) evolved [32].

The maintenance of higher FMR in UtM-species could also depend on the fact that the position of load during carrying may affect the center of gravity, unbalancing the wasp while flying. A recently developed model shows that, among species carrying prey impaled on the sting (i.e. well posterior to the wasp center of gravity), the  $Load_{max}$  can be severely reduced compared to the expected value [33]. Wasps can limit to some extent this problem by increasing the angle which the straight line connecting the wasp with the load center of mass makes with the horizontal line [33], but, evolutionarily speaking, any increase in FMR, positively affecting  $Load_{max}$ , would help in carrying larger prey in such an unbalanced flight mode.

On the other hand, AtM species are far from approaching the average values of relative load size observed among UtM species, as they appear carrying loads weighing only  $31 \pm 6\%$  (calculated from data of 17 species provided in [20,34-36]). This value is much lower than the average %  $Load_{max}$  estimated for our set of AtM-species (86%).

Actually, females of UtM-species were sometimes observed to return to the nests with a prey weighing more than  $Load_{max}$ , implying an unsuccessful take-off [7]. With very large prey items, UtM wasps can potentially shift to an alternative strategy, such as carrying the prey to the nest by dragging it on the ground. Such behaviour has been described in some (but not all) species, though flight transportation was the preferred option if prey size is adequate [7]. For example, *Ammophila* spp. typically drag large caterpillar prey over the ground, but shift to flight transportation in case of smaller prey (reviewed in [37]). Indeed, dragging a prey on the ground may make it much more vulnerable to kleptoparasites and predators. The cicada-hunting wasp *Sphecius speciosus* can drag very large cicadas over a distance sometimes full of

obstacles (e.g. dense and high grass) which makes prey prone to be abandoned and exploited by ants [7]. Dragging a prey over such complex substrates may also increase the duration of the hunting trip compared to flying across the same distance. Despite hunting site-nest distances are not provided and conclusions cannot be really drawn, data from the literature reported very short hunting trips ( $\leq 2$  minutes) apparently only for flight-carrying wasps (e.g. [38-41]). Thus, although in specific cases wasps can use the alternative strategy of dragging very large prey, we expect a fitness advantage in term of foraging efficiency (e.g. number of prey hunted per day) when the prey is carried in flight. Clearly, a robust and direct comparison of the actual fitness costs and benefits of prey carrying in flight vs. prey dragging would be needed to confirm this speculation.

An interesting consequence of load-lifting/manoeuvrability constraints concerns diet composition and resource specialization. In bees, any individual could have access to its preferred resource (assuming these are available in the foraging environment) because food collection is only limited by the number of pollen grains it can carry and by the nectar volume it can ingest, i.e. by volumetric, not mass, constraints. In wasps that are able to manipulate food load the situation is similar: Coelho and Hoagland [20] studied the foraging behaviour of *Vespula germanica* on dead honeybees, and found that foragers too small to carry entire honeybees simply chopped body parts and took off with a smaller portion [20], without the need to discard the food item and search for a new, smaller one. Food manipulation ability would thus help to exploit the target food in a highly efficient way. At the same time, AtM-wasps can have access to a wider range of prey types, since also large prey, once chopped, can be readily exploited. Such increased efficiency in foraging may have even been important in promoting the evolution of eusociality, since social behaviour is unstable unless it provides important economic benefits and fitness gains to the individuals [42]. As a matter of fact, eusociality arose at least five times independently within AtM-lineages, while apparently only once within UtM-lineages (see also [43,44] for theoretical predictions on the link between food resource and social evolution in Hymenoptera).

On the other side, wasp species unable to manipulate food load will face a more adverse situation if the prey item is too large to be carried, and the wasp has to spend additional time and energy to search for a different, smaller, profitable prey [7]. In a simple model, Polidori et al. [45] predicted that wasp species hunting for hemimetabolous prey can be so affected by the body growth of their preferred prey during the course of the breeding season that they may be forced to shift to different prey species at a certain point. Later, a study on the orthopteran-hunting wasp, *Stizus continuus*, confirmed this prediction [46]. Furthermore, this shift to

smaller prey species is confined in such wasps to only few other species, given their phylogenetic constraint in prey selection (typically prey species belong to one single order [17]), so that overall prey spectrum cannot be wide as in AtM-wasps.

As an additional advantage, higher FMR would enhance the escape ability of UtM-species, given that FMR is correlated with linear acceleration and the ability to accelerate vertically against gravity [2] and with flight speed [47]. Low WL is expected to confer similar advantages. In UtM-wasps, which are also those limited to hunt for living prey, lower WL could increase manoeuvrability during prey transportation, but could also increase efficiency while pursuing a living prey (e.g. via reduced minimum flight-speed requirement and turning radius), including fast-flying insects [48]. A similar example involves bats, in which species with greater WL forage in areas where there are fewer obstacles to detect and avoid [49]. On the other side, increased WL consistently decreased escape performance in a bird [50].

Despite higher WL requires higher wing-beat frequency and increases flight cost [51], flight speed generally increases with WL [11,52], so that higher WL could be positively selected in specific contexts. For example, males of perching butterfly species (which sit and wait on prominent landmarks and rapidly take off to intercept females) had higher WL than patrolling closely-related species [53]. AtM-species may thus fly faster while sacrificing manoeuvrability (an important factor while carrying loads) than UtM-species. These considerations, together with the observed negative covariation of FMR and WL across species, suggest that the selection pressures related to foraging (load-lifting/manoeuvrability) constitute the main determinants of flight morphology in central-place foraging Hymenoptera.

Moreover, among AtM species, investment in flight muscles and wing size, which would be of limited adaptive value during foraging, may further be counteracted by contrasting selection acting on other life-history traits, such as reproductive investment. In butterflies, for example, palatable species have higher FMR because of higher predation risk and stronger escape demands, but also smaller ovaries than unpalatable species, suggesting that investment in the flight apparatus and predator avoidance trades off with investment in reproduction [2]. Intriguingly, a preliminary analysis based on literature data suggests that this could be the case also among the Apoidea. In fact, the number of ovarioles per ovary was significantly higher in bees ( $3.6 \pm 0.09$ ,  $n = 32$  species) than in apoid wasps ( $2.9 \pm 0.03$ ,  $n = 75$  species) ( $t_{39} = 6.8$ ,  $P < 0.0001$ ) (data from [54,55]; highly eusocial bee species (queens), parasitoid apoid wasps and brood-parasitic apoid wasps were not considered because of their peculiar life-style). Though it might be speculated

that eusocial bee species represent an exception to this pattern, we note that honeybee workers can have from 1 to 12 ovarioles per ovary (with an average of about 4) [56], thus roughly agreeing with the rest of bees. In addition, workers of one species of *Bombus* (the primitively eusocial *B. morio*) have the same number of ovarioles per ovary as related solitary species (4) [54]. This hypothesis, however, needs a robust, phylogenetically controlled, test, using species for which both flight morphology and measurements of fecundity are available.

## Conclusion

Our findings suggest that load-carrying constraints related to foraging have affected the evolution of flight morphology in flying central-place foraging Hymenoptera, and that release from these constraints, which took place with the evolution of food load manipulation ability, has selected against the maintenance of a costly flight apparatus, which could possibly be traded against reproductive investment.

## Materials and methods

### Sample collection and morphological measurements

We collected data on species from the two superfamilies Apoidea (families Apidae, Crabronidae, Megachilidae, Sphecidae) and Vespoidea (family Vespidae), including bees (pollen/nectar collectors) and wasps (prey collectors) (Table 1). A total of 216 females from 21 species [5–35 females per species,  $10.8 \pm 7.2$  (s.d.) females per species on average] were caught in the field, in natural populations found in the Parque Natural de la Albufera, Valencia province (South-Eastern Spain), during the spring-summer 2009–2010. Specimens were determined to species level following taxonomic keys [57–59] and with the aid of experts; however, for seven of them we could only reach the genus level and therefore assigned specimens to morphospecies (Table 1). Additional data for seven species were obtained from the literature (Table 1). Overall, 14 species fell in the AtM group and 14 species in the UtM group. Bees and wasps were killed by freezing upon collection. Within 2–3 hours, females were weighed in the lab with an electronic balance (to the nearest 0.002 g) ( $M_b$ , body mass). We then separated the thorax from the rest of the body and weighed it ( $M_t$ , thorax mass). FMR was calculated as  $(0.95 \times M_t/M_b)$  for individual specimens [6], and the average value within species was used in interspecific comparisons. For each species, we further calculated the predicted maximum food load mass which can be carried in flight after a successful take-off ( $Load_{max}$ ) according to the regression equation of maximum lift force vs. flight muscle mass for bees and wasps provided in Table five of [6]. Finally, by adding  $M_b$  to  $Load_{max}$ , we calculated the total maximum load mass which can be carried ( $M_{max}$ ).

One wing pair (forewing and hindwing) was gently separated from the thorax, and then scanned on an Epson 2450 flatbed scanner (720 dpi). NIH ImageJ was used to determine individual wing area; total wing area ( $A_w$ ) refers to the area of both wing pairs and was obtained by doubling the previous measurements. We then calculated the wing loading WL ( $M_b/A_w$ ) [10] for each individual, and the average value within species was used in interspecific comparisons. Measures were taken to the nearest 0.002 mm.

As wet body mass can be confounded by body condition and water content, we repeated the calculations of FMR and WL using dry mass (after oven-drying all body parts for 48 hours at 70 °C). In addition, we also measured the head width (a good predictor of body size in Hymenoptera, e.g. [60]) with a digital calliper (to the nearest 0.02 mm) to obtain a condition-independent body size estimate (Additional file 1: Table S2). For the sample of species we collected, the correlation between wet and dry mass was very high ( $r = 0.89$ ,  $n = 21$  species,  $\log_{10}$ -transformed variables). Moreover, there was a strict positive correlation between head width and wet mass ( $r = 0.90$ ,  $n = 21$  species,  $\log_{10}$ -transformed variables). Therefore, in the following analysis we used wet mass instead of dry mass because dry mass was not available for the seven species for which we obtained data from the literature (Table 1). Using wet mass instead of dry mass did not affect our conclusions (see also Results), as wet body mass truly reflects across-species differences in body size. Importantly, it is the wet mass that needs to be lifted by the insects and therefore it is the most relevant variable to measure from an eco-evolutionary standpoint.

For the morphological variables we recorded ( $M_b$ ,  $M_t$ ,  $A_w$ ), the variance among species was significantly larger than the variance within species ( $F$ -values always  $> 18$ ,  $P < 0.0001$ ).

### Molecular analyses

In comparative studies, species cannot be considered as independent sampling units as their shared ancestry may affect actual phenotypic values [61,62]. For this reason, we built a molecular phylogeny of the studied species to conduct comparative analyses accounting for phylogenetic relationships among species.

Tissue samples of the measured individuals could not be stored in suitable conditions to allow for genetic analyses; we therefore used sequences of a fragment of the 18S rRNA gene and of the 28S rRNA gene of 28 selected taxa of Apoidea and Vespoidea retrieved from GenBank. Whenever possible, we retrieved sequences from the same species for which we had morphological data; if no sequences were available for a given species, sequences from congeneric species were used. The complete list of taxa and GenBank accession numbers is provided in

Additional file 1: Table S1. Homologous 18s rRNA and 28s rRNA gene sequences of *Scolecbythus madecassus* (Evans) (Hymenoptera: Chrysidoidea) were used as an outgroup.

Sequences were aligned using CodonCode Aligner (v. 3.7.1.1, Codon Code Corporation). GBLOCKS [63] was used to delete highly divergent regions which could either not be unambiguously aligned or were saturated by multiple substitutions, or required assumption of multiple indels.

Preliminary analyses showed congruencies both in terms of topology and support between Bayesian and Maximum Likelihood phylogenetic analyses; we therefore decided to perform the analyses of this study using the faster Bayesian algorithm. Partitioned Bayesian inference searches were performed using MrBayes 3.1.2 [64] with the following 2 partitions: 18S rRNA gene and 28S rRNA gene. The best-fitting model of substitution for each partition was determined by AIC in jModeltest [65] and the GTR + I + G model was selected for both partitions.

To obtain a topology congruent with the most recent and well-established phylogenetic hypotheses, the following three constraints were used in the Bayesian phylogenetic analyses: (a) Sphecidae were constrained in basal position to the Crabronidae, Apidae and Megachilidae; (b) Crabronidae were constrained as monophyletic; (c) Apidae and Megachilidae were constrained as monophyletic [66].

We performed two runs of 10 million generations (started on random trees) and four incrementally heated Markov chains (using default heating values) each, sampling the Markov chains at intervals of 1000 generations. Stabilization and convergence of likelihood values was checked by visualizing the log likelihoods associated with the posterior distribution of trees in the program Tracer [67]. The first five million generations were conservatively discarded and five millions trees were retained post burn-in and summed to generate the majority rule consensus tree (Figure 1).

Likelihood unequivocal reconstruction of character evolution was performed using the ancestral state module implemented in MESQUITE (Version 2.75; [68]). The character evolution and ancestral states were reconstructed by mapping the character “food manipulation ability” (as a binary categorical trait, UtM vs. AtM) on the rooted topology generated from the previously described MrBayes analyses (Figure 1). As a major advantage, Maximum Likelihood takes branch lengths into account and allows quantifying the uncertainty associated with each reconstructed ancestral state [69]. For the likelihood apomorphic trends and ancestral state reconstruction we used the symmetrical Markov k-state one-parameter model (MK1) [70], which assumes a single rate of transition between two character states, and any particular change is equally probable. The likelihoods



are reported as proportional likelihoods and are indicated as pie charts in Figure 1. Likelihood ratios at a node are compared by pairs, and the conventional cut-off point for assessing the significance of one state at a given node over the other (defined as a 'rule-of-thumb' [69]) is if their likelihoods differ by more than 2 log units (default setting in Mesquite).

### Statistical analyses

The relationships between flight morphology (FMR and WL) and food load manipulation ability (UtM vs. AtM) were analysed while accounting for common ancestry effects in the data (Felsenstein 1985; Garland et al. 1992). We controlled for phylogeny by means of phylogenetic generalized least-squares (PGLS) models [71-73], as implemented by the 'ape' library [74] of the software R (version 2.8.1) (R Development Core Team 2008). The phylogenetic variance-covariance matrix was obtained by the 'corPagel' function. The level of phylogenetic autocorrelation of species' traits included in a PGLS model was expressed in terms of the  $\lambda$  index [72], that varies between 0 (phylogenetic independence) and 1 (species' traits covary in proportion to their shared evolutionary history). PGLS models including the phylogenetic variance-covariance matrix multiplied by  $\lambda$  return phylogenetically corrected parameter estimates of covariation between phenotypic traits [72,73]. We tested whether the degree of phylogenetic dependence among traits was statistically significant by comparing a model where  $\lambda$  was set to 0 (i.e. assuming phylogenetic independence) with the model where it was allowed to reach its maximum likelihood value, according to a Brownian motion model of character evolution [74], by means of likelihood ratio (LR) tests [73]. We built two PGLS models, testing whether food load manipulation ability (0 = UtM; 1 = AtM) affected FMR and WL, respectively. In all models, we included body mass ( $\log_{10}$ -transformed) as an additional covariate. This was especially relevant for the model of WL, since this variable is known to scale allometrically with body mass across insect species according to a power function [51,75], and this was the case also in the present dataset (exponent of the power function = 0.394,  $F_{1,22} = 45.9$ ,  $P < 0.001$ ,  $r^2 = 0.68$ ). To linearize the relationship between WL and body mass, we therefore  $\log_{10}$ -transformed both variables before including them in all statistical models. Model residuals were normally distributed in all cases (Lilliefors test, P-values always  $> 0.16$ ). Visual inspection of the data suggested that the variances in WL might differ according to food load manipulation (see Figure 2b). However, accounting for heterogeneity of variances in the PGLS model, by allowing the two levels of the covariate of food load manipulation to have different variances (see [76] for details), did not significantly improve model fit (LR test,  $P = 0.59$ ), and did

not qualitatively alter our conclusions (details not shown for brevity). We therefore report estimates from models not controlling for heteroscedasticity.

Finally, we analysed the covariation between FMR and WL by running a PGLS with WL as the dependent variable and FMR and body mass as predictors. Parameter estimates and mean values are reported together with their associated standard error (s.e.).

### Additional file

**Additional file 1: Table S1.** List of taxa and GenBank accession numbers of sequences used in the phylogenetic reconstruction. **Table S2.** Thorax mass ( $M_t$ ), maximum food load that females could theoretically carry in flight after a successful take-off ( $Load_{max}$ ), maximum total load that females could theoretically carry in flight ( $M_{max} = body\ mass + Load_{max}$ ), maximum % of food load that females could theoretically carry relative to body mass ( $(Load_{max}/body\ mass) \times 100$ ), total area of the wings ( $A_w$ ) and head width (HW) for the species used in the study. Category of food manipulation ability is reported (0 = unable to manipulate food load, 1 = able to manipulate food load). **Table S3.** PGLS models testing the effects of food load manipulation ability (0 = UtM; 1 = AtM) on flight muscle ratio (FMR) and ( $\log_{10}$ -transformed) wing-loading (WL) calculated based on dry body mass values, while controlling for head width ( $\log_{10}$ -transformed) as an index of body size ( $n = 21$  species). The maximum likelihood estimate value of  $\lambda$ , assessing the degree of phylogenetic dependence among the tested variables (see Materials and methods), is shown for each model.

### Abbreviations

FMR: Flight muscle ratio; WL: Wing loading; AtM: Able to manipulate food load; UtM: Unable to manipulate food load;  $M_b$ : Body mass;  $M_t$ : Thorax mass;  $Load_{max}$ : Maximum food load that females could theoretically carry in flight after a successful take-off;  $M_{max}$ : Maximum total load ( $Load_{max} + M_b$ ) that females could theoretically carry in flight after a successful take-off;  $A_w$ : Total area of the wings; HW: Head width.

### Competing interests

The authors have declared that no competing interests exist.

### Authors' contributions

CP designed the study. CP, LD and JS sampled the species in the field. CP and LD collected the morphological data. AC performed the phylogenetic reconstruction. DR, CP and NS carried out the statistical analyses. CP, DR and AC drafted the manuscript. All the authors read and approved the final manuscript.

### Acknowledgements

Thanks are due to José Tormos, who helped with species identification. Pau Mendiola helped with sample collection. Davide Santoro and Heike Feldhaar kindly provided pictures for Figure 1. CP's research was supported by a JAE-Doc post-doctoral contract (funded by the Spanish Research Council (CSIC) and the FSE) and by the program "Estades temporals per a Investigadors Convidats" of the University of Valencia (Spain). The work of AC was supported by a postdoctoral grant from the Fundação para a Ciência e a Tecnologia (FCT) (SFRH/BPD/72908/2010). We acknowledge support of the publication fee by the CSIC Open Access Publication Support Initiative through its Unit of Information Resources for Research (URICI). Finally, we thank J. H. Marden and an anonymous referee for constructive criticism on an earlier version of the manuscript.

### Author details

<sup>1</sup>Departamento de Biodiversidad y Biología Evolutiva, Museo Nacional de Ciencias Naturales (CSIC), C/ José Gutiérrez Abascal 2, 28006 Madrid, Spain. <sup>2</sup>CIBIO, Centro de Investigação em Biodiversidade e Recursos Genéticos, Campus Agrário de Vairão, Rua Padre Armando Quintas, Vairão, Vila do Conde 4485-661, Portugal. <sup>3</sup>Department of Biology, McGill University, Stewart Biology Building, Docteur Penfield 1205, Montreal, Quebec H3A 1B1, Canada.

<sup>4</sup>Departament de Zoologia, Universitat de València, C/Dr. Moliner 50, València, Burjassot 46100, Spain. <sup>5</sup>Dipartimento di Bioscienze, Università degli Studi di Milano, Via Celoria 26, Milano 20133, Italy.

Received: 19 March 2013 Accepted: 20 June 2013  
Published: 28 June 2013

## References

- Marden JH: **Body building dragonflies: costs and benefits of maximizing flight muscle.** *Physiol Zool* 1989, **62**:505–521.
- Marden JH, Chai P: **Aerial predation and butterfly design: how palatability, mimicry and the need for evasive flight constrain mass allocation.** *Am Nat* 1991, **138**:15–36.
- Kemp DJ, Alcock J: **Aerial contests, sexual selection and flight morphology in solitary pompilid wasps.** *Ethology* 2008, **114**:195–202.
- van den Hout PJ, Mathot KJ, Maas LRM, Piersma T: **Predator escape tactics in birds: linking ecology and aerodynamics.** *Behav Ecol* 2010, **21**:16–25.
- Irschick DJ, Garland T Jr: **Integrating function and ecology in studies of adaptation: studies of locomotor capacity as a model system.** *Annu Rev Ecol Syst* 2001, **32**:367–396.
- Marden JH: **Maximum lift production during takeoff in flying animals.** *J Exp Biol* 1987, **130**:235–258.
- Coelho JR: **Effects of prey size and load carriage on the evolution of foraging strategies in wasps.** In *Predation in the Hymenoptera: an evolutionary perspective*. Edited by Polidori C. Kerala, India: Transworld Research Network; 2011:23–38.
- Norberg UM: **Flight performance, and habitat use in bats.** In *Ecological Morphology: Integrative organismal biology*. Edited by Wainwright PC, Reilly SM. Chicago, IL: University of Chicago Press; 1994:205–239.
- Angelo MJ, Slansky F Jr: **Body building by insects: trade-offs in resource allocation with particular reference to migratory species.** *Fla Entomol* 1984, **67**:22–41.
- Ellington CP: **Limitations on animal flight performance.** *J Exp Biol* 1991, **160**:71–91.
- Dudley R: **Biomechanics of flight in neo-tropical butterflies: morphometrics and kinematics.** *J Exp Biol* 1990, **150**:37–53.
- Coelho JR, Holliday CW: **Effects of size and flight performance on intermale mate competition in the cicada killer, *Sphecius speciosus* Drury (Hymenoptera: Sphecidae).** *J Insect Behav* 2001, **14**:345–351.
- Marden JH, Cobb JR: **Territorial and mating success of dragonflies that vary in muscle power output and presence of gregarine gut parasites.** *Anim Behav* 2004, **68**:657–665.
- Yao I: **Phylogenetic comparative methods reveal higher wing loading in ant-attended *Tuberculatus* aphids (Hemiptera: Aphididae).** *Can Entomol* 2011, **143**:34–43.
- Yao I, Katagiri C: **Comparing wing loading, flight muscle, and lipid content in ant-attended and non-attended *Tuberculatus* aphid species.** *Physiol Entomol* 2011, **36**:327–334.
- Warrick DR: **The turning and linear maneuvering performance of birds: The cost of efficiency for courting insectivores.** *Can J Zool* 1998, **76**:1063–1079.
- O'Neill KM: *Solitary wasps: Behaviour and Natural History*. Ithaca, New York: Cornell University Press; 2001.
- Raveret Richter M: **Social wasps (Hymenoptera: Vespidae) foraging behaviour.** *Annu Rev Entomol* 2000, **45**:121–150.
- Michener CD: *The Bees of the World*. Baltimore, USA: Johns Hopkins University Press; 2000.
- Coelho JR, Hoagland J: **Load-lifting capacity and foraging of three species of yellowjackets (*Vespa*) on honey-bee corpses.** *Funct Ecol* 1995, **9**:171–174.
- Tomkins JL, Simmons LW, Alcock J: **Brood provisioning strategies in Dawson's burrowing bee, *Amegilla dawsoni* (Hymenoptera: Anthophorini).** *Behav Ecol Sociobiol* 2001, **50**:81–89.
- Buchwald R, Dudley R: **Limits to vertical force and power production in bumblebees (Hymenoptera: *Bombus impatiens*).** *J Exp Biol* 2010, **213**:426–432.
- Roberts SP, Harrison JF, Dudley R: **Allometry of kinematics and energetics in Carpenter Bees (*Xylocopa varipuncta*) hovering in variable-density gases.** *J Exp Biol* 2004, **207**:993–1004.
- Coelho JR, Hastings JM, Holliday CW, Mendell AM: **Load carriage during foraging in two species of solitary wasps.** *J Hymenopt Res* 2008, **17**:57–63.
- Edgar PK, Coelho JR: **Load-lifting constraints on provisioning and nest building in the carpenter wasp, *Monobia quadridens* L. (Hymenoptera: Eumenidae).** *J Hymenopt Res* 2000, **9**:370–376.
- Polidori C, Santoro D, Tormos J, Asís JD: **Individual prey specialization in wasps: predator size is a weak predictor of taxonomic niche width and niche overlap.** In *Predation in the Hymenoptera: an evolutionary perspective*. Edited by Polidori C. Kerala, India: Transworld Research Network; 2011:101–122.
- Coelho JR, Hastings JM, Holliday CW: **Near-optimal foraging in the Pacific cicada killer *Sphecius convallis* Patton (Hymenoptera: Crabronidae).** *Insects* 2012, **3**:133–140.
- Asís JD, Baños-Picón L, Tormos J, Ballesteros Y, Alonso M, Gayubo SF: **Are solitary progressive-provisioning wasps optimal foragers? A study with the digger wasp *Bembix merceti* (Hymenoptera: Crabronidae).** *Behaviour* 2011, **148**:191–214.
- Melo GAR, Hermes MG, Garcete-Barrett BR: **Origin and occurrence of predation among Hymenoptera: a phylogenetic perspective.** In *Predation in the Hymenoptera: an evolutionary perspective*. Edited by Polidori C. Kerala, India: Transworld Research Network; 2011:1–22.
- Danforth BN, Cardinal SC, Praz C, Almeida E, Michez D: **Impact of molecular data on our understanding of bee phylogeny and evolution.** *Ann Rev Entomol* 2013, **58**:57–78.
- Hines HM, Hunt JH, O'Connor TK, Gillespie JJ, Cameron SA: **Multigene phylogeny reveals eusociality evolved twice in vespid wasps.** *Proc Natl Acad Sci USA* 2007, **104**:3295–3299.
- Hunt JH: **Trait mapping and salience in the evolution of eusocial vespid wasps.** *Evolution* 1999, **53**:225–237.
- Andrietti F, Polidori C: **Carrying unbalanced weights in hovering flight: effect of prey position on load maximization in wasps.** In *Advances in Medicine and Biology* vol. 33. Edited by Berhart LV. New York: Nova Science Publishers; 2012:75–98.
- Ishay J, Bylinski-Salz H, Shulov A: **Contributions to the bionomics of the oriental hornet (*Vespa orientalis* Fab.).** *Isr J Entomol* 1967, **2**:45–106.
- Archer ME: **The weights of forager loads of *Paravespula vulgaris* (Linn.) (Hymenoptera: Vespidae) and the relationship of load weight to forager size.** *Insectes Soc* 1977, **24**:95–102.
- Neff JL: **Components of nest provisioning behavior in solitary bees (Hymenoptera: Apoidea).** *Apidologie* 2008, **39**:30–45.
- Evans HE: **The evolution of prey-carrying mechanisms in wasps.** *Evolution* 1962, **16**:468–483.
- Polidori C, Boesi R, Isola F, Andrietti F: **Provisioning patterns and choice of prey in the digger wasp *Cerceris arenaria* (Hymenoptera: Crabronidae): the role of prey size.** *Eur J Entomol* 2005, **102**:801–804.
- Polidori C, Zangheratti V, Martinoli A, Andrietti F: **Temporal transition of nesting activities in the digger wasp, *Bembecinus tridens* (Hymenoptera: Crabronidae).** *Italian J Zool* 2007, **74**:265–275.
- Boesi R, Polidori C, Bevacqua S, Tormos J, Asís JD, Andrietti F: **Trap-nesting *Ancistrocerus sikhimensis* (Hymenoptera: Eumenidae) in Nepal: nest structure and associates (Hymenoptera: Chrysididae; Acarina: Saprogliphidae).** *Fla Entomol* 2005, **88**:135–140.
- Villalobos EM, Shelly TE: **Intraspecific nest parasitism in the sandwasp *Stictia heros* (Fabr.) (Hymenoptera: Sphecidae).** *J Insect Behav* 1996, **9**:105–119.
- Jaffe K: **On the relative importance of haplo-diploidy, assortative mating and social synergy on the evolutionary emergence of social behavior.** *Acta Biotheor* 2001, **49**:29–42.
- da Silva ER, Jaffe K: **Expanded food choice as a possible factor in the evolution of eusociality in Vespidae.** *Sociobiology* 2002, **39**:25–36.
- Strohm E, Liebig J: **Why are so Many Bees but so Few Digger Wasps Social? The Effect of Provisioning Mode and Helper Efficiency on the Distribution of Sociality Among the Apoidea.** In *Ecology of Social Evolution*. Edited by Korb J, Heinze J. Heidelberg: Springer; 2008:109–128.
- Polidori C, Gobbi M, Chatenaud L, Santoro D, Montani O, Andrietti F: **Taxon-biased diet preference in the "generalist" beetle-hunting wasp *Cerceris rubida* provides insights on the evolution of prey specialization in apoid wasps.** *Biol J Linn Soc* 2010, **99**:544–558.
- Santoro D, Polidori C, Asís JD, Tormos J: **Complex interactions between components of individual prey specialization affect mechanisms of niche variation in a grasshopper-hunting wasp.** *J Anim Ecol* 2011, **80**:1123–1133.
- Srygley RB, Dudley R: **Correlations of the position of centre of body mass with butterfly escape tactics.** *J Exp Biol* 1993, **174**:155–166.
- Polidori C, Santoro D, Blüthgen N: **Does prey mobility affect niche width and individual specialization in hunting wasps? A network-based analysis.** *Oikos* 2013, **122**:385–394.
- Kalcounis MC, Brigham RM: **Intraspecific variation in wing loading affects habitat use by little brown bats (*Myotis lucifugus*).** *Can J Zool* 1995, **73**:89–95.

50. Burns JG, Ydenberg RC: **The effects of wing loading and gender on the escape flights of least sandpipers (*Calidris minutilla*) and western sandpipers (*Calidris mauri*).** *Behav Ecol Sociobiol* 2002, **52**:128–136.
51. Byrne DN, Buchmann SL, Spangler HG: **Relationship between wing loading, wingbeat frequency and body mass in homopterous insects.** *J Exp Biol* 1988, **135**:9–23.
52. Norberg UM: *Vertebrate Flight*. Berlin, Germany: Springer-Verlag; 1990.
53. Wickman PO: **Sexual selection and butterfly design – a comparative study.** *Evolution* 1992, **46**:1525–1536.
54. Martins GF, Serrão JE: **A comparative study of the ovaries in some Brazilian bees (Hymenoptera; Apoidea).** *Pap Avulsos Zool (São Paulo)* 2004, **44**:45–53.
55. Ohl M, Linde D: **Ovaries, ovarioles, and oocytes in apoid wasps, with special reference to cleptoparasitic species (Hymenoptera: Apoidea, "Sphecidae").** *J Kansas Entomol Soc* 2003, **76**:147–159.
56. Makert GR, Paxton RJ, Hartfelder K: **Ovariole number - a predictor of differential reproductive success among worker subfamilies in queenless honeybee (*Apis mellifera* L.) colonies.** *Behav Ecol Sociobiol* 2006, **60**:815–825.
57. Bitsch J, Leclercq J: *Hyménoptères Sphecidae d'Europe occidentale. I. Généralités. Crabroninae. Faune de France 79.* Paris: Fédération française des Sociétés de Sciences Naturelles; 1993.
58. Bitsch J, Barbier Y, Gayubo SF, Schmidt K, Ohl M: *Hyménoptères Sphecidae d'Europe occidentale, Volume 2. Faune de France 82.* Paris: Fédération française des Sociétés de Sciences Naturelles; 1997.
59. Bitsch J, Dollfuss H, Boucek Z, Schmidt K, Schmid-Egger C, Gayubo SF, Antropov AV, Barbier Y: *Hyménoptères Sphecidae d'Europe occidentale, Volume 3. 2nd edition. Faune de France 86.* Paris: Fédération française des Sociétés de Sciences Naturelle; 2007.
60. Ohl M, Thiele K: **Estimating body size in apoid wasps: the significance of inear variables in a morphologically diverse taxon (Hymenoptera, Apoidea).** *Museum für Naturkudeder Humbolt Universität zu Berlin* 2007, **83**:110–124.
61. Felsenstein J: **Phylogenies and the comparative method.** *Am Nat* 1985, **125**:1–15.
62. Garland TJ, Harvey PH, Ives AR: **Procedures for the analysis of comparative data using phylogenetically independent contrasts.** *Syst Biol* 1992, **41**:18–32.
63. Castresana J: **Selection of conserved blocks from multiple alignments for their use in phylogenetic analysis.** *Mol Biol Evol* 2000, **17**:540–552.
64. Ronquist F, Huelsenbeck JP: **MrBayes 3: Bayesian phylogenetic inference under mixed models.** *Bioinformatics* 2003, **19**:1572–1574.
65. Posada D: **jModelTest: Phylogenetic Model Averaging.** *Mol Biol Evol* 2008, **25**:1253–1256.
66. Danforth BN: **Bees – A primer.** *Curr Biol* 2007, **17**:R156–R161.
67. Rambaut A, Drummond AJ: *Tracer v1.4.* computer program. 2007 <http://beast.bio.ed.ac.uk/Tracer>.
68. Maddison WP, Maddison DR: *Mesquite: a modular system for evolutionary analysis. Version 2.75.* [computer program]. 2011 <http://mesquiteproject.org>.
69. Pagel M: **The maximum likelihood approach to reconstructing ancestral character states of discrete characters on phylogenies.** *Syst Biol* 1999, **48**:612–622.
70. Lewis PO: **A likelihood approach to estimating phylogeny from discrete morphological character data.** *Syst Biol* 2001, **50**:913–925.
71. Pagel M: **Inferring evolutionary processes from phylogenies.** *Zool Scr* 1997, **26**:331–348.
72. Pagel M: **Inferring the historical patterns of biological evolution.** *Nature* 1999, **401**:877–884.
73. Freckleton RP, Harvey PH, Pagel M: **Phylogenetic analysis and comparative data: a test and review of evidence.** *Am Nat* 2002, **160**:712–726.
74. Paradis E: *Analysis of Phylogenetics and Evolution with R.* New York: Springer; 2006.
75. Darveau C-A, Hochachka PW, Welch KC, Roubik DW, Suarez RK: **Allometric scaling of flight energetics in Panamanian orchid bees: a comparative phylogenetic approach.** *J Exp Biol* 2005, **208**:3581–3591.
76. Zuur AF, Ieno EI, Walker NJ, Saveliev AA, Smith GM: *Mixed effects models and extensions in ecology with R.* New York: Springer; 2009.

doi:10.1186/1742-9994-10-36

**Cite this article as:** Polidori et al.: Food load manipulation ability shapes flight morphology in females of central-place foraging Hymenoptera. *Frontiers in Zoology* 2013 **10**:36.

**Submit your next manuscript to BioMed Central and take full advantage of:**

- **Convenient online submission**
- **Thorough peer review**
- **No space constraints or color figure charges**
- **Immediate publication on acceptance**
- **Inclusion in PubMed, CAS, Scopus and Google Scholar**
- **Research which is freely available for redistribution**

Submit your manuscript at  
[www.biomedcentral.com/submit](http://www.biomedcentral.com/submit)

