



RESEARCH

Open Access

# Regulation of red fluorescent light emission in a cryptic marine fish

Matthias F Wucherer and Nico K Michiels\*

## Abstract

**Introduction:** Animal colouration is a trade-off between being seen by intended, intra- or inter-specific receivers while not being seen by the unintended. Many fishes solve this problem by adaptive colouration. Here, we investigate whether this also holds for fluorescent pigments. In those aquatic environments in which the ambient light is dominated by bluish light, red fluorescence can generate high-contrast signals. The marine, cryptic fish *Tripterygion delaisi* inhabits such environments and has a bright red-fluorescent iris that can be rapidly up- and down-regulated. Here, we described the physiological and cellular mechanism of this phenomenon using a neurostimulation treatment with KCl and histology.

**Results:** KCl-treatment revealed that eye fluorescence regulation is achieved through dispersal and aggregation of black-pigmented melanosomes within melanophores. Histology showed that globular, fluorescent iridophores on the anterior side of the iris are grouped and each group is encased by finger-like extensions of a single posterior melanophore. Together they form a so-called *chromatophore unit*. By dispersal and aggregation of melanosomes into and out of the peripheral membranous extensions of the melanophore, the fluorescent iridophores are covered or revealed on the anterior (outside) of the iris.

**Conclusion:** *T. delaisi* possesses a well-developed mechanism to control the fluorescent emission from its eyes, which may be advantageous given its cryptic lifestyle. This is the first time chromatophore units are found to control fluorescent emission in marine teleost fishes. We expect other fluorescent fish species to use similar mechanisms in the iris or elsewhere in the body. In contrast to a previously described mechanism based on dendritic fluorescent chromatophores, chromatophore units control fluorescent emission through the cooperation between two chromatophore types: an emitting and an occluding type. The discovery of a second mechanism for fluorescence modulation strengthens our view that fluorescence is a relevant and adaptive component of fish colouration.

**Keywords:** Pigmentation, Fluorescence, Tripterygiidae, Triplefin blenny, Camouflage, Signalling, Marine fishes

## Introduction

Colour vision is widespread in the animal kingdom and has driven the evolution of body colouration [1]. Conspicuous colouration is often associated with mate choice [2-4], warning signals [5-7] or species recognition and communication [8-11]. Light emission through bioluminescence has also been proposed as a detection and communication mechanism [12]. Cryptic colouration patterns, however, are required to hide from visual predators or to approach potential prey [9,10,13,14]. Many colour patterns are therefore a compromise between being visible to the intended

receivers while avoiding the attention of the unintended, e.g. predators [15-18]. These opposing forces drive the evolution of adaptive, context-dependent body colouration [19-21]. Cephalopods, bony fishes, amphibians and reptiles achieve this by complex arrangements of pigmented skin cells or chromatophores, such as melanophores (black), xanthophores (yellow), erythrophores (red) and iridophores (structural colours) [9,21,22]. It is the complex interplay of these cell types that generates colour appearances ranging from well-camouflaged lizards to the most brightly coloured reef fishes [23].

Colourful aquatic animals face the constraint that water absorbs long wavelengths (> 600 nm) to a much higher degree than short and medium wavelengths [24]. Consequently, many marine environments below 10–20 m are

\* Correspondence: nico.michiels@uni-tuebingen.de  
Animal Evolutionary Ecology, Department of Biology, Faculty of Science,  
University of Tübingen, Auf der Morgenstelle 28, D-72076, Tübingen, Germany

essentially blue-green. In the absence of long wavelengths, however, none of the usual reflective pigmentation mechanisms can generate shades of red (600–700 nm). Fluorescent pigments can restore those “lost” colours by absorbing the available light and re-emitting it at a longer wavelength [24–26]. This process is different from bioluminescence, where photons are generated through a chemical reaction. In many fishes and cephalopods, the latter function is provided by microbial symbionts [26–28].

Many marine animal phyla are known to fluoresce, with cnidarians being the best investigated group [29–34]. We recently showed that a number of fish taxa show fluorescence in the near red range (600–630 nm) and proposed fluorescent pigmentation as a new signalling mechanism or a mechanism for highlighting prey or predators with reflecting eyes [25]. Knowing that many marine fishes are trichromatic [35,36], red fluorescence has the potential to generate strong, visible chromatic contrasts at depth. Conspicuous signals, however, may attract attentive predators that can see them. We would therefore expect that fluorescence can be modulated on demand – as is the case for (eye) colouration in other marine fishes [37]. Recently, we described a first pigment cell type with this feature: a dendritic, red fluorescent chromatophore in the clear fins of the pygmy goby *Eviota atriventris* (previously misidentified as *Eviota pellucida*, see [38]) that actively disperses and aggregates intracellular fluorescent particles, modulating the brightness of the fluorescent emissions [39].

Here, we describe a second mechanism for fluorescence modulation in the cryptic Mediterranean triplefin, *Tripterygion delaisi xanthosoma* (Tripterygiidae), a species that can be found predominantly at depths between –6 and –40 m. It generally prefers shady rock faces, crevices and overhangs, particularly in the upper part of its depth distribution [40,41]. At these sites, the long wavelength component of sunlight has been largely absorbed by the water column, and scatter from the open water dominates the ambient light [24,42]. The eyes of *T. delaisi* have a strongly red fluorescent iris, similar to that of several other small, benthic fishes [25] (Figures 1A and 2). It is clearly visible to a SCUBA diver in the field – without the aid of filters. Interestingly, *T. delaisi* has the ability to rapidly vary eye fluorescence brightness in the laboratory (Figure 1B, C), something we have also observed in the field. We suspected that this mechanism involves melanophores, which are known to occlude reflective pigment cells in the skin of many other species [43–47]. We tested this by triggering the aggregation of melanosomes in melanophores using potassium ions  $K^+$  [21,22,48] and investigating their interrelationship with the fluorescent cells in the iris. We also characterise the cell complex that generates and controls fluorescence by means of histology and 3D-reconstruction.

## Results

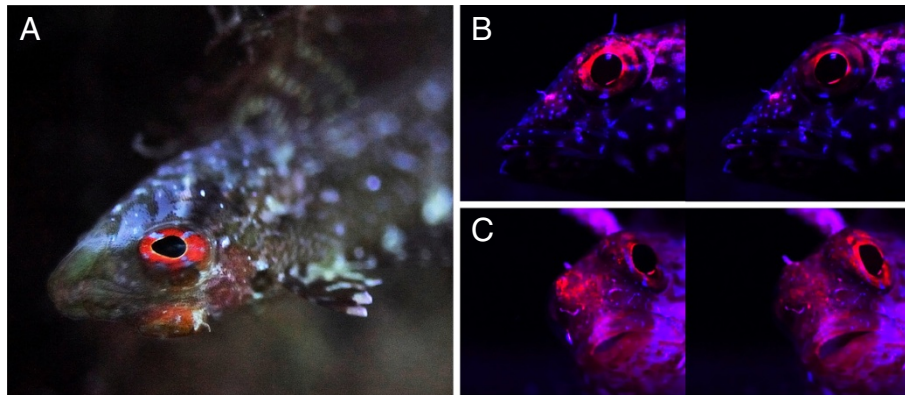
### Change in fluorescence brightness after KCl treatment

After  $K^+$  treatment, the fluorescent area increased significantly from  $23.3 \pm 6.7\%$  (mean  $\pm$  SD) of the iris surface in neutral saline to  $71.5 \pm 6.8\%$  after KCl-treatment (3A, comparison of start and end values using paired t-test  $t = 14.1$ ,  $df = 7$ ,  $P < 0.0001$ ). This was confirmed by total photon radiance measurements of eye fluorescence, which increased significantly from on average  $1.6 \times 10^{16}$  at 0 s to  $3.8 \times 10^{16}$  photons  $s^{-1} sr^{-1} m^{-2}$  at 450 s (Figure 3B, paired t-test  $t = 4.79$ ,  $df = 5$ ,  $P = 0.0049$ , eyes grouped per individual). Figure 4 shows that the change in brightness due to the  $K^+$  treatment affected the whole emission spectrum equally. When normalising all spectra, no obvious spectral shifts can be distinguished (Figure 4B).

### Iris histology

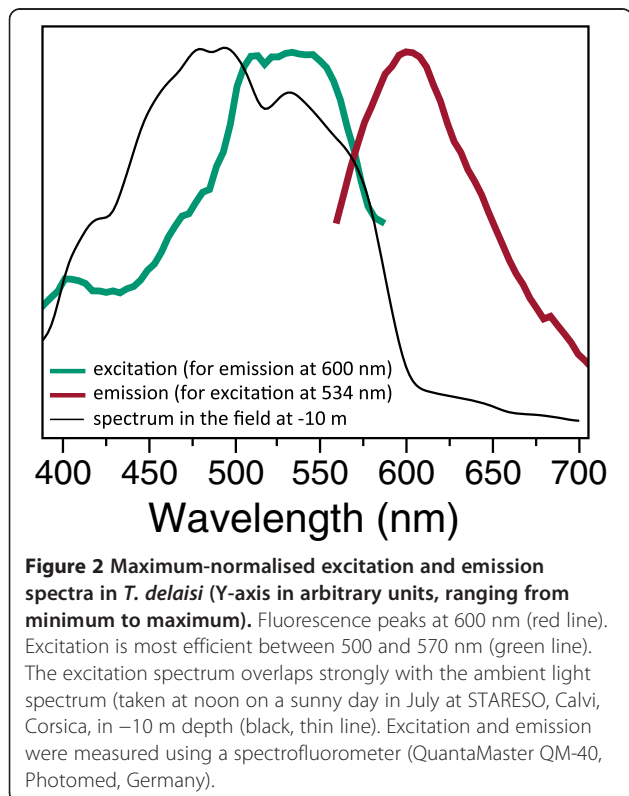
Histological sections of the iris showed that fluorescence is located in the *stratum argenteum*, anterior to a densely packed black-pigmented melanophore layer. As in many other teleosts, the *stratum argenteum* mainly consists of densely packed, globular iridophores ([49], Figure 5). Iridophores are chromatophores that lack regular pigments, but contain stacks of thin, crystalline platelets made of a mixture of guanine and hypoxanthine [22]. In other fishes these are known to generate silvery iridescence [50] or structural colouration through multilayer thin-film interference [22,51,52]. In the iris of *T. delaisi*, we identified the platelets as the structures containing the fluorescent pigment (Figure 6).

Independent of the posterior, dense melanophore layer, the *stratum argenteum* also possesses a number of melanophores on its posterior side. These melanophores show finger-like processes, which interdigitate and cover the anterior side of the fluorescent iridophores (Figures 5, 7 and 8). In samples taken before  $K^+$  treatment (Figure 7A), more melanosomes were located in the anterior, dendritic processes, darkening the outside of the iris. In this situation, the posterior somata of the melanophores were smaller. In the post-treatment state, almost all melanosomes were withdrawn from the outside of the iris, accumulating in the posterior body of the melanophores (Figure 7B). These observations indicate that in the pre-treatment, “dark” state, aggregation of melanosomes on the outer surface of the iris prevents ambient incoming light from reaching the iridophores. In addition, melanosomes in the finger-like extensions presumably block fluorescence excitation as well as emission inside the *stratum argenteum*. In the aggregated state, ambient light can reach and be absorbed by the fluorescent iridophores and then re-emitted as red light. Modulation of fluorescence does not require a change of the reflective configuration of the iridophores, but can be achieved by occlusion by melanosomes only. A single melanophore can be associated with multiple iridophores



**Figure 1** Red fluorescence in the iris of *Tripterygion delaisi*. Illustration of fluorescence in *Tripterygion delaisi* **A**. Individual showing red fluorescent eye-ring (= iris) under natural conditions (at -23 m, upside down under shady overhang, STARESO, Corsica, using a Nikon D700 DSLR, image taken without flash or filter and manually adjusted white balance). **B** and **C** are two pairs of images, each of which was taken with a 5 s delay showing rapid changes in the brightness of iris fluorescence in the laboratory using blue illumination and a red filter for viewing.

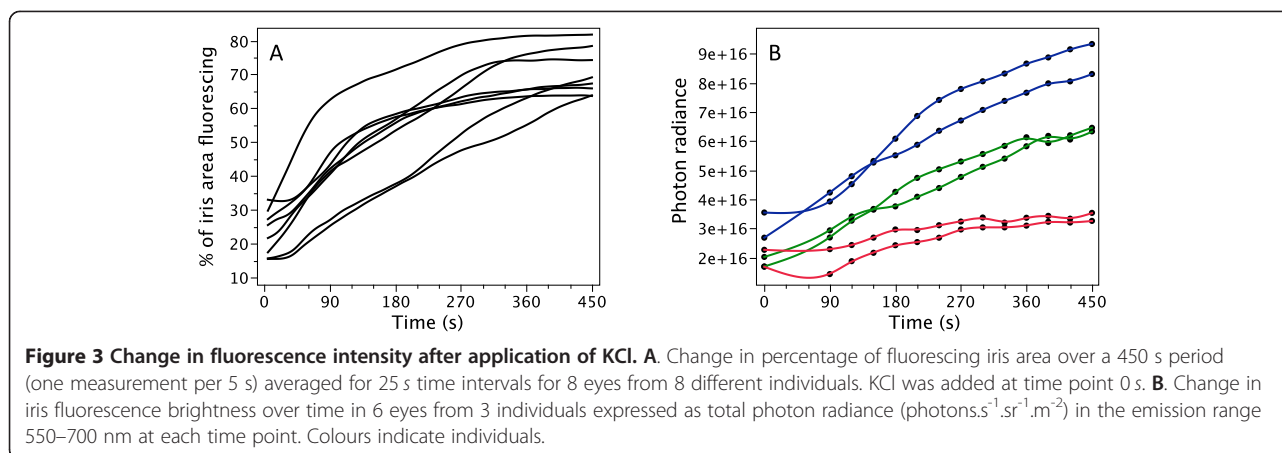
and a single iridophore can be covered by extensions coming from different melanophores. Figure 7C shows a cross-section of the untreated iris under SEM, confirming that the iridophore layer is fully packed with guanine crystals, interdigitated with melanosomes-filled extensions from melanophores situated at the posterior side of the *stratum argenteum*. Figure 8 shows a 3D-reconstruction based on sections such as those shown in Figures 7A-B.



## Discussion

The long wavelength fluorescence in the iris of *T. delaisi* is emitted by red fluorescent guanine crystals, which are stacked in iridophores, the dominant cell type in the *stratum argenteum*. The brightness of fluorescence is modulated by rapid (2–6 min) transport of melanosomes between the soma of posterior melanophores and their finger-like extensions that stretch anteriorly through the *stratum argenteum* and cover the iridophores anteriorly. Given that the whole process can be controlled by the presence or absence of  $K^+$  ions indicates that it is under neuronal control [48]. Histological investigation revealed that iridophores and melanophores cooperate in so-called *chromatophore complexes* or *units*, whereby multiple cells of one type interact and overlap with multiple cells of the other kind. This is mainly due to the network-like structure generated by the cellular extensions of the melanophores. Such complexes are known to control colouration in the skin of fishes, amphibians and reptiles [21,23,53]. Chromatophore units often consist of a xanthophore and/or iridophore plus a melanophore [54]. In *T. delaisi* only two kinds of chromatophores are involved. In all cases, posterior melanophores aggregate or disperse melanosomes, thereby controlling the brightness [55] of the associated anterior iridophores. Our study now shows that such units are also used to control fluorescent emission.

The presence of red fluorescence in guanine crystals is a feature known from other red fluorescent fish species, including pipefish of the genus *Corythoichthys* [25]. The iris of *Corythoichthys paxtoni* has a structure similar to that of *T. delaisi* [56]. It is therefore quite likely that some pipefish also possess chromatophore units similar to the ones described here. Own field observations indicate that other triplefin species of the genera *Tripterygion*, *Helcogramma* and *Enneapterygius* and gobies belonging to the



genus *Ctenogobrops* and *Istigobius* also show red fluorescent irides that can be quickly darkened or lightened (pers. observations, N. K. Michiels), suggesting that this mechanism is not limited to a few rare cases.

#### An active role for iridophores?

Our data do not allow us to make conclusive inferences whether the observed changes in fluorescent emission are in part caused by conformational changes in the orientation or distance of the guanine platelets in the *stratum argenteum*. Motile iridophores are known from cephalopods [9] as well as from fishes with prominent iridescent or structural colour patterns [57–61]. In some of these cases, rapid (within seconds) changes in hue and brightness can be observed through conformational changes in motile iridophores. Although our data do not allow us to exclude that such a process may have contributed to the observed changes in brightness, the emitted hue remained unaffected under the conditions tested (Figure 4).

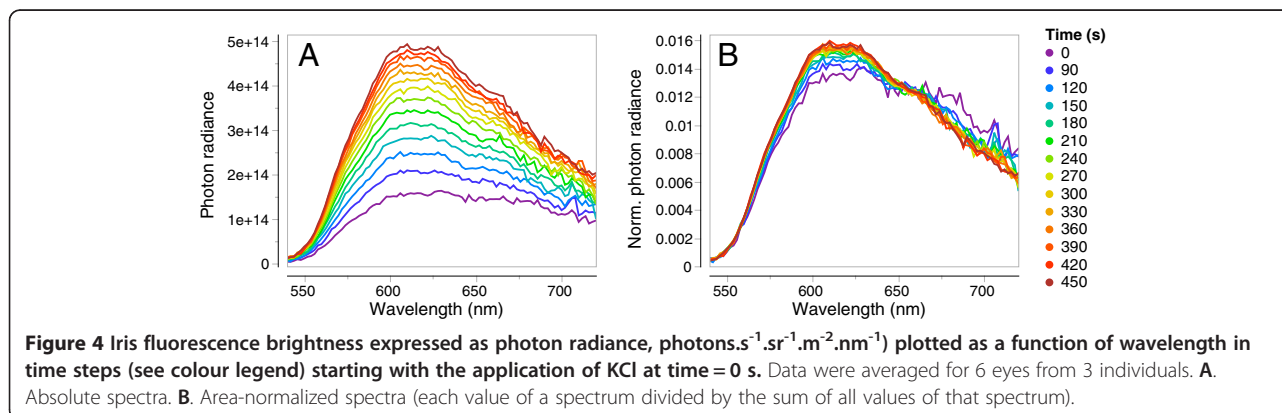
#### Comparison with colour change mechanisms in cephalopods

An analogous, well-understood mechanism to modulate colour is the chromatophore organ in cephalopods [62]. It also consists of different cell types that cooperate to control

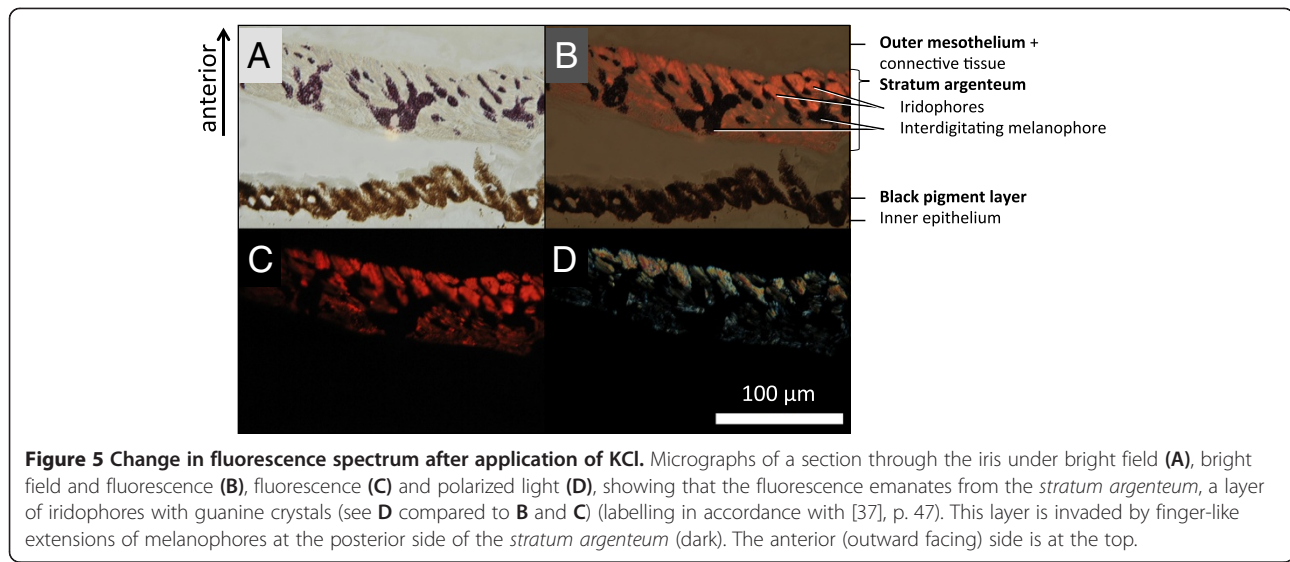
colour [63]. In cephalopods, however, this is achieved by the action of radial muscles that change the shape of coloured chromatophores. Upon contraction, the muscles stretch and thereby display the pigmented content of a pigment sac inside the chromatophore [23,64]. Muscle relaxation leads to spontaneous contraction of the pigment sac, hiding the pigment [63,64]. Light passing through the system is reflected by iridophores that sit behind the complex.

#### Possible function

As  $\text{K}^+$  stimulates action potentials in neurons, it is safe to conclude that *T. delaisi* modulates its fluorescence through a neuronally-controlled mechanism [65]. We observed that specimens of *T. delaisi* become darker when stressed or when inactive, but during spontaneous activity, particularly when foraging, the brightness of the iridial fluorescence visibly increases (unpublished observations). The brightness of fluorescence therefore likely constitutes a relevant cue that is possibly used in a foraging context. Since peak emission is in the near-red spectral range (590–610 nm), it is very likely that other fish can perceive the fluorescence of *T. delaisi*. Work in progress confirms that *T. delaisi* is a trichomat including a LWS receptor, making it likely that it can see its own fluorescence.







## Conclusion

Red fluorescence in the iris of *T. delaisi* is controlled by so-called chromatophore units, which consist of a melanophore and several fluorescent iridophores. Modulation of fluorescence is achieved by nervous control of the aggregation state of melanosomes in melanophores. The presence of this sophisticated control mechanism suggests that *T. delaisi* controls its fluorescence actively. This reduces the constraints raised by the colouration trade-off between contrast and camouflage at depths below -10 m. In shallower water, the same process will modulate the overall reflective properties of the iris.

## Material and methods

### Fluorescence in *Tripterygion delaisi*

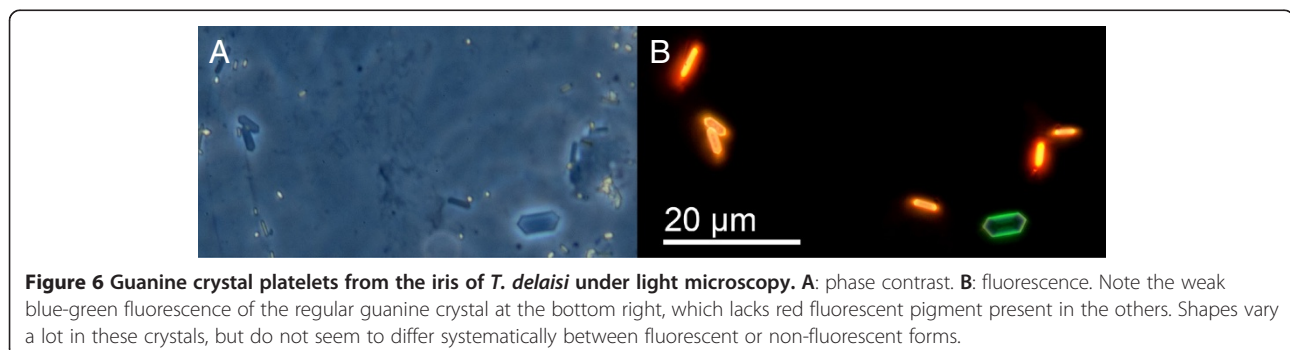
*Tripterygion delaisi* (Tripterygiidae) occurs throughout the East-Atlantic Ocean and West-Mediterranean Sea. It is a small (up to 6 cm), cryptic, benthic predator feeding on micro-crustaceans between -5 and -40 m depth. When approached, individuals freeze rather than flee, indicating that they rely on their camouflage. Yet, *T. delaisi* has prominent red fluorescent irides (Figure 1). Its fluorescence is characterized by light absorption across a broad range of

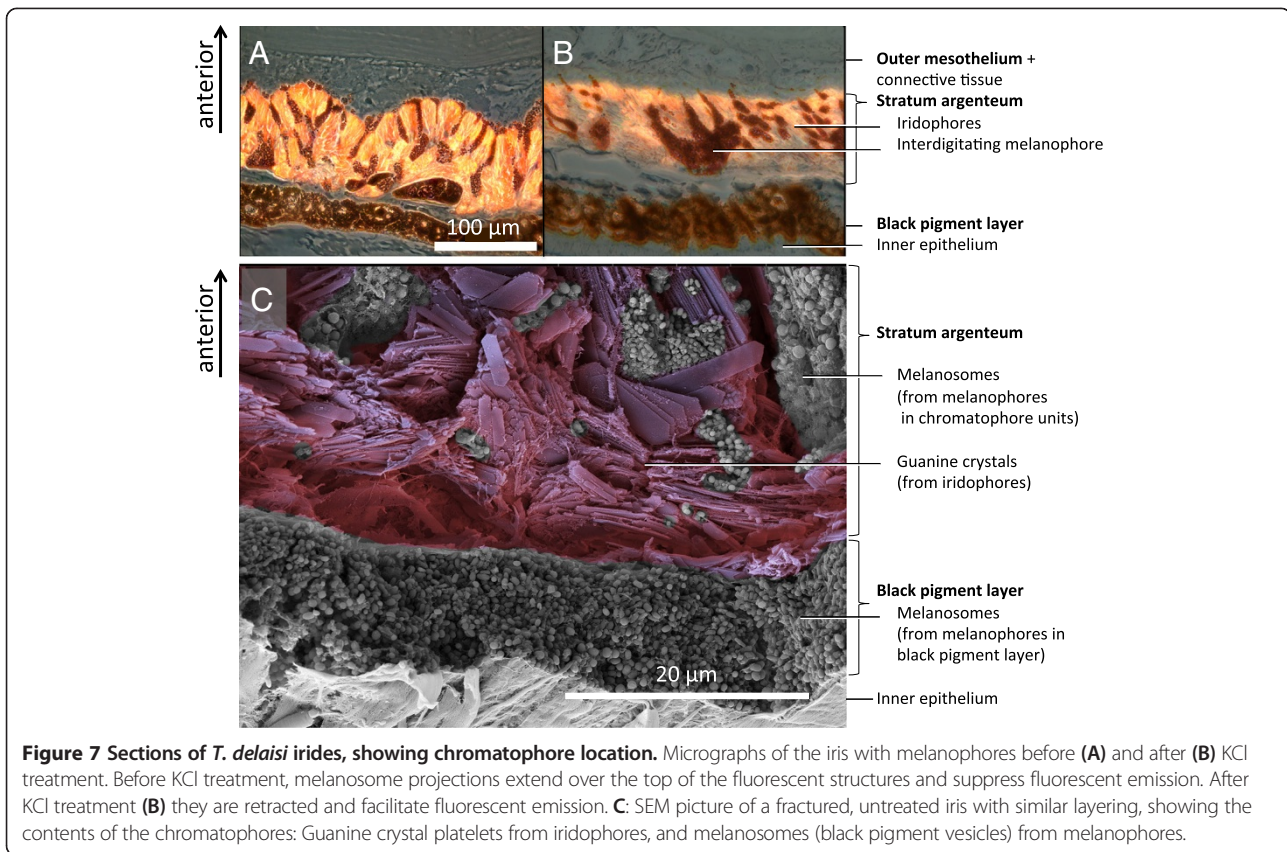
the ambient spectrum (Figure 2) and a peak emission at 600 nm (bright red). The relationship between fluorescence and ambient light will be published in detail elsewhere (Michiels *et al.* in prep.). All juvenile (< 1 cm) and adult stages show fluorescent irides throughout the year. The brightness of fluorescence can vary strongly and quickly (Figure 1). Pilot studies in the field and in the lab showed that downregulation is associated with inactivity or stress (e.g. when handled). Upregulation is often seen in the context of foraging.

Specimens of *T. delaisi* were collected in Corsica, France at the STARESO Marine Science Station, under the general sampling permit of the station. In Tübingen, Germany, fish were kept in individual divisions of a large flow-through aquarium (20°C, salinity 34‰, pH 8.2). For the experiments, fish were decapitated, dissected and the eyes were stored in physiological saline as described by Wucherer and Michiels [39]. All work was carried out and recorded in accordance to German animal protection legislation.

### Temporal change in fluorescence area and brightness

Eyes were immersed in saline by placing them on a perforated 8 mm Ø plastic platform in a 35 mm Ø petri dish.

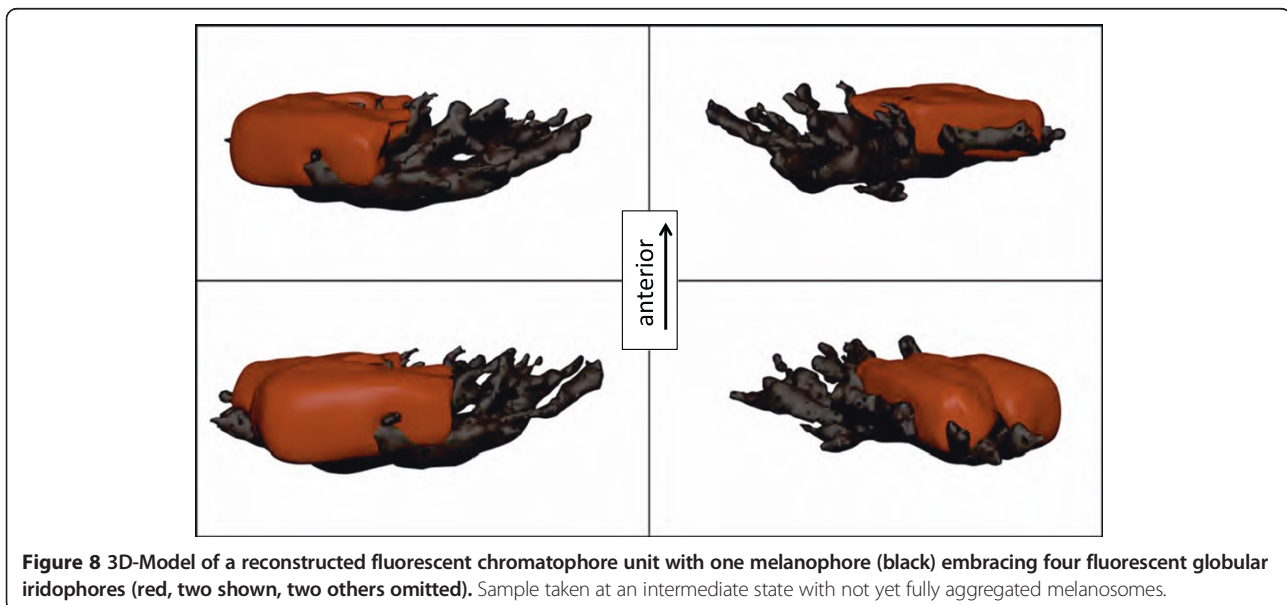




**Figure 7** Sections of *T. delaisi* irides, showing chromatophore location. Micrographs of the iris with melanophores before (A) and after (B) KCl treatment. Before KCl treatment, melanosome projections extend over the top of the fluorescent structures and suppress fluorescent emission. After KCl treatment (B) they are retracted and facilitate fluorescent emission. C: SEM picture of a fractured, untreated iris with similar layering, showing the contents of the chromatophores: Guanine crystal platelets from iridophores, and melanosomes (black pigment vesicles) from melanophores.

They were investigated under a Leica MZ 16 F fluorescence stereomicroscope (band-pass filter with 530–560 nm for excitation). Fluorescent emission was viewed through a second, non-overlapping bandpass-filter (590–650 nm) and documented using a Nikon D300 DSLR. For each

treatment, a 450 s time-lapse recording was taken providing an image every 5 s. At the start (0 s) we replaced the saline with a high KCl-solution (in mM: NaCl 78, KCl 50, CaCl<sub>2</sub> 1.8, MgCl<sub>2</sub> 1.8, D(+)-Glucose 5.6, Tris-HCl 5.0; pH 7.2). Total ion concentration was identical to the saline



**Figure 8** 3D-Model of a reconstructed fluorescent chromatophore unit with one melanophore (black) embracing four fluorescent globular iridophores (red, two shown, two others omitted). Sample taken at an intermediate state with not yet fully aggregated melanosomes.

solution. Eyes from eight fish were analysed, one of each fish exposed to the KCl-treatment, the other one to the control treatment.

In order to calculate the fluorescent area, images were imported as stacks into ImageJ (v. 10.2, J. Rasband, NIH, USA), set to 8-bit grey-scale and inverted. A threshold was set to distinguish between fluorescent and non-fluorescent areas (black in the original image). Then the fluorescent area of every image was determined by counting the proportion of fluorescent pixels relative to those of the whole iris. For statistical analysis, time and the proportion of fluorescent area were entered into JMP (v. 9, SAS, USA).

Fluorescence brightness (photon radiance) was measured using a SpectraScan PR670 spectroradiometer (Photoresearch, Chatsworth, CA, USA). Six eyes were dissected from three fish and pre-treated as described above. Each eye was illuminated at an angle of 45° with an LED light source with peak emission at 455 nm (LLS455, Sandhouse, Dunedin, FL, USA). Fluorescence was measured from above, perpendicular to the iris with the measuring point aimed to exactly cover the complete iris (0.5° measurement angle). Measurements were taken before and at 8 time points after application of the KCl solution: 0, 90, 120, 180, 240, 300, 360, 420, 450 s. Data were summarized as the cumulative sum of photons.s<sup>-1</sup>.sr<sup>-1</sup>.m<sup>-2</sup> across the emission range (500–750 nm) (= fluorescence brightness).

### Histology

Following KCl-treatment, eyes were fixed and embedded as described for fin tissue by Wucherer and Michiels [39]. We cut 1.5 µm sections parallel to the axis of vision (axial plane) using a diamond knife and mounted the sections in a non-fluorescent medium (Vectashield, Vector). Digital micrographs of each section were stacked to generate a 3D-reconstruction of the chromatophore unit (chromatophores and surrounding cells) using TrakEM2 [66,67]. The 3D-model was smoothed and vertices were reduced using Blender (v. 2.63a).

Sub-cellular structures in an iris cross-section were visualised by scanning electron microscopy of the fracture zone of an untreated freeze-dried *T. delaisi* iris by Oliver Meckes and Nicole Ottawa from Eye of Science GbR (<http://www.eyeofscience.com>) (Figure 6C).

### Ethical approval

Fish were sacrificed under permit no. ZO 1/10 from 18 Oct 2010, prolonged on 26 Nov 2011 till 15 Dec 2012 to the corresponding author. The permit was issued by the Animal Protection Office at the Regierungspräsidium, Referat 35, Konrad-Adenauer-Straße 20, 72072 Tübingen, Germany.

### Competing interests

The authors declare that they have no competing interests.

### Authors' contributions

MFW planned and collected most of the data presented. He also analysed and summarized the data and wrote the first drafts of the manuscript. NKM was the supervisor of the work, contributed data for Figure 2 and prepared the statistical analysis, the graphs and the text for publication. Both authors read and approved the final manuscript.

### Acknowledgments

This work was supported by Koselleck grant Mi482/13-1 from the Deutsche Forschungsgemeinschaft DFG to NKM. The manuscript benefited greatly from constructive criticism provided by Nils Anthes, Shaun P. Collin, Sandra Dangelmayer, Melissa Meadows and two anonymous referees. We are also very grateful to Oliver Meckes from Eye of Science GbR (<http://www.eyeofscience.com>) for producing excellent SEM pictures of the iris of *T. delaisi* together with Silke Probst. Thanks to Julia Steigleder for making the pictures for Figure 1B and C. Rita Triebkorn and Stefanie Krais (Uni Tübingen) kindly helped us with the histological sectioning. Thanks also to Oeli Oelkrug for taking care of the fish. Gregor Schulte provided constant support in microscopy, spectrometry and photography, for which we are very grateful.

Received: 9 September 2013 Accepted: 23 December 2013

Published: 8 January 2014

### References

1. Marshall J: Why are animals colourful? Sex and violence, seeing and signals. *Colour Des Creativity* 2010, **8**:1–8.
2. Kozak GM, Head ML, Lackey ACR, Boughman JW: Sequential mate choice and sexual isolation in threespine stickleback species. *J Evol Biol* 2013, **26**:130–140.
3. Maan ME, Seehausen O, Van Alphen JJM: Female mating preferences and male coloration covary with water transparency in a Lake Victoria cichlid fish. *Biol J Linn Soc* 2010, **99**:398–406.
4. Blakeslee C, McRobert SP, Brown AC, Clotfelter ED: The effect of body coloration and group size on social partner preferences in female fighting fish (*Betta splendens*). *Behav Processes* 2009, **80**:157–161.
5. Saporito RA, Zuercher R, Roberts M, Gerow KG, Donnelly MA: Experimental evidence for aposematism in the dendrobatid poison frog *Oophaga pumilio*. *Copeia* 2007, **2007**:1006–1011.
6. Aronsson M, Gamberale-Stille G: Evidence of signaling benefits to contrasting internal color boundaries in warning coloration. *Behav Ecol* 2013, **24**:349–354.
7. Guilford T: How do warning colors work - conspicuousness may reduce recognition errors in experienced predators. *Anim Behav* 1986, **34**:286–288.
8. Siebeck UE, Parker AN, Sprenger D, Mäthger LM, Wallis G: A species of reef fish that uses ultraviolet patterns for covert face recognition. *Curr Biol* 2010, **20**:407–410.
9. Mäthger LM, Denton EJ, Marshall NJ, Hanlon RT: Mechanisms and behavioural functions of structural coloration in cephalopods. *J R Soc Interface* 2009, **6**:S149–S163.
10. Losey GS: Crypsis and communication functions of UV-visible coloration in two coral reef damselfish *Dascyllus aruanus* and *Dascyllus reticulatus*. *Anim Behav* 2003, **66**:299–307.
11. Kelley CD, Hourigan TF: The function of conspicuous coloration in chaetodontid fishes - a new hypothesis. *Anim Behav* 1983, **31**:615–617.
12. Howland HC, Murphy CJ, McCosker JE: Detection of eyeshine by flashlight fishes of the family anomalopidae. *Vision Res* 1992, **32**:765–769.
13. Leclercq E, Taylor JF, Migaud H: Morphological skin colour changes in teleosts. *Fish Fish* 2010, **11**:159–193.
14. Sumner FB: Does "protective coloration" protect? Results of some experiments with fishes and birds. *Proc Natl Acad Sci USA* 1934, **20**:559–564.
15. Endler JA: Variation in the appearance of guppy color patterns to guppies and their predators under different visual conditions. *Vision Res* 1991, **31**:587–608.
16. Endler JA: Some general comments on the evolution and design of animal communication systems. *Philos Trans R Soc Lond B Biol Sci* 1993, **340**:215–225.
17. Marshall NJ: Communication and camouflage with the same 'bright' colours in reef fishes. *Philos Trans R Soc Lond B Biol Sci* 2000, **355**:1243–1248.



18. Hemmi JM, Marshall J, Pix W, Vorobyev M, Zeil J: **The variable colours of the fiddler crab *Uca vomeris* and their relation to background and predation.** *J Exp Biol* 2006, **209**:4140–4153.
19. Price AC, Weadick CJ, Shim J, Rodd FH: **Pigments, patterns, and fish behavior.** *Zebrafish* 2008, **5**:297–307.
20. Cott HB: *Adaptive coloration in animals.* London: Methuen; 1940.
21. Hawkes JW: **Structure of fish skin 2. Chromatophore unit.** *Cell Tissue Res* 1974, **149**:159–172.
22. Fujii R: **The regulation of motile activity in fish chromatophores.** *Pigment Cell Res* 2000, **13**:300–319.
23. Bagnara JT, Hadley ME: *Chromatophores and color change: the comparative physiology of animal pigmentation.* Englewood Cliffs, NJ: Prentice-Hall; 1973.
24. Lythgoe JN: *The Ecology of Vision.* Oxford: Clarendon Press; 1979.
25. Michiels N, Anthes N, Hart N, Herler J, Meixner A, Schleifenbaum F, Schulte G, Siebeck U, Sprenger D, Wucherer M: **Red fluorescence in reef fish: a novel signalling mechanism?** *BMC Ecol* 2008, **8**:16.
26. Johnsen S, Marshall NJ: **Through the looking glass: are silvery fish safe from viewers with polarization vision?** *Integr Comp Biol* 2012, **52**:E87–E87.
27. Haddock SHD, Moline MA, Case JF: **Bioluminescence in the sea.** *Ann Rev Mar Sci* 2010, **2**:443–493.
28. Widder EA: **Bioluminescence in the ocean: origins of biological, chemical, and ecological diversity.** *Science* 2010, **328**:704–708.
29. Shimomura O, Johnson FH, Saiga Y: **Extraction, purification and properties of Aequorin, a bioluminescent protein from the luminous hydromedusa *Aequorea*.** *J Cell Comp Physiol* 1962, **59**:223–239.
30. Chalfie M, Tu Y, Euskirchen G, Ward W, Prasher D: **Green fluorescent protein as a marker for gene expression.** *Science* 1994, **263**:802–805.
31. Salih A, Larkum A, Cox G, Kuhl M, Hoegh-Guldberg O: **Fluorescent pigments in corals are photoprotective.** *Nature* 2000, **408**:850–853.
32. Kenkel CD, Traylor MR, Wiedenmann J, Salih A, Matz MV: **Fluorescence of coral larvae predicts their settlement response to crustose coralline algae and reflects stress.** *Proc R Soc B-Biol Sci* 2011, **278**:2691–2697.
33. Field SF, Matz MV: **Retracing evolution of red fluorescence in GFP-like proteins from *Faviina* corals.** *Mol Biol Evol* 2010, **27**:225–233.
34. Mazel HC: **Spectral measurements of fluorescence emission in Caribbean cnidarians.** *Mar Ecol Prog Ser* 1995, **120**:185–191.
35. Hart NS, Lisney TJ, Marshall NJ, Collin SP: **Multiple cone visual pigments and the potential for trichromatic colour vision in two species of elasmobranch.** *J Exp Biol* 2004, **207**:4587–4594.
36. Siebeck UE, Wallis GM, Litherland L: **Colour vision in coral reef fish.** *J Exp Biol* 2008, **211**:354–360.
37. Nicol JAC: *The Eyes of Fishes.* Oxford: Clarendon Press; 1989.
38. Greenfield DW, Suzuki T: ***Eviota atriventris*, a New Goby Previously Misidentified as *Eviota pellucida* Larson (Teleostei: Gobiidae).** *Zootaxa* 2012(3197):55–62.
39. Wucherer MF, Michiels NK: **A fluorescent chromatophore changes the level of fluorescence in a reef fish.** *Plos One* 2012, **7**(6):7.
40. Zander CD, Heymer A: ***Tripterygion tripteronotus* Risso 1810 und *Tripterygion xanthosoma* n. sp., eine ökologische Speziation.** *Vie Milieu A* 1970, **21**:363–394.
41. Louisy P: *Meeresfische: Westeuropa und Mittelmeer.* Stuttgart: Ulmer Verlag; 2002.
42. Johnsen S: *The Optics of Life: A Biologist's Guide to Light in Nature.* Princeton: Princeton University Press; 2012.
43. Sugimoto M: **Morphological color changes in fish: regulation of pigment cell density and morphology.** *Microsc Res Tech* 2002, **58**:496–503.
44. Zarnescu O: **Ultrastructure of the skin melanophores and iridophores in paddlefish *Polyodon spathula*.** *Micron* 2007, **38**:81–84.
45. Logan DW, Burn SF, Jackson IJ: **Regulation of pigmentation in zebrafish melanophores.** *Pigment Cell Res* 2006, **19**:206–213.
46. Taylor JD, Bagnara JT: **Dermal chromatophores.** *Am Zool* 1972, **12**:43–62.
47. Bagnara JT: **Developmental aspects of vertebrate chromatophores.** *Am Zool* 1983, **23**:465–478.
48. Fujii R, Novales RR: **Cellular aspects of the control of physiological color changes in fishes.** *Am Zool* 1969, **9**:453–463.
49. Collin SP, Collin HB: **The morphology of the retina and lens of the sandlance, *Limnichthys fasciatus* (Creeiidae).** *Exp Biol* 1988, **47**:209–218.
50. Levy-Lior A, Pokroy B, Levavi-Sivan B, Leiserowitz L, Weiner S, Addadi L: **Biogenic guanine crystals from the skin of fish may be designed to enhance light reflectance.** *Cryst Growth Des* 2008, **8**:507–511.
51. Goda M, Fujii R: **The blue coloration of the common surgeonfish *Paracanthurus hepatus*—II. Color revelation and color changes.** *Zool Sci* 1998, **15**:323–333.
52. Bagnara JT, Fernandez PJ, Fujii R: **On the blue coloration of vertebrates.** *Pigment Cell Res* 2007, **20**:14–26.
53. Kasukawa H, Oshima N: **Divisionistic generation of skin hue and the change of shade in the Scalycheek Damselfish, *Pomacentrus lepidogenys*.** *Pigment Cell Res* 1987, **1**:152–157.
54. Grether GF, Kolluru GR, Nersissian K: **Individual colour patches as multicomponent signals.** *Biol Rev* 2004, **79**:583–610.
55. Raposo G, Marks MS: **Melanosomes-dark organelles enlighten endosomal membrane transport.** *Nat Rev Mol Cell Biol* 2007, **8**:786–797.
56. Collin HB, Collin SP: **Ultrastructure and organization of the cornea, lens and iris in the pipefish, *Corythoichthys paxtoni* (Syngnathidae, Teleostei).** *Histol Histopathol* 1995, **10**:313–323.
57. Kasukawa H, Oshima N, Fujii R: **Control of chromatophore movements in Dermal Chromatic Units of Blue Damselfish .2. The Motile Iridophore.** *Comp Biochem Physiol C Pharmacol Toxicol Endocrinol* 1986, **83**:1–7.
58. Lythgoe JN, Shand J: **Changes in spectral reflexions from the iridophores of the neon tetra.** *J Physiol(Cambridge)* 1982, **325**:23–34.
59. Lythgoe JN, Shand J: **The structural basis for iridescent colour changes in dermal and corneal iridophores in fish.** *J Exp Biol* 1989, **141**:313–325.
60. Oshima N, Fujii R: **Motile Mechanism of Blue Damselfish (Chrysiptera-Cyanea) Iridophores.** *Cell Motil Cytoskeleton* 1987, **8**:85–90.
61. Mähnger LM, Land MF, Siebeck UE, Marshall NJ: **Rapid colour changes in multilayer reflecting stripes in the paradise whiptail, *Pentapodus paradiseus*.** *J Exp Biol* 2003, **206**:3607–3613.
62. Mähnger LM, Hanlon RT: **Malleable skin coloration in cephalopods: selective reflectance, transmission and absorbance of light by chromatophores and iridophores.** *Cell Tissue Res* 2007, **329**:179–186.
63. Cloney RA, Florey E: **Ultrastructure of Cephalopod Chromatophore Organs.** *Zeitschrift Fur Zellforschung Und Mikroskopische Anatomie* 1968, **89**:250.
64. Bell GRR, Kuzirian AM, Senft SL, Mähnger LM, Wardill TJ, Hanlon RT: **Chromatophore radial muscle fibers anchor in flexible squid skin.** *Invertebr Biol* 2013, **132**:120–132.
65. Nagaishi H, Oshima N: **Neural control of motile activity of light-sensitive iridophores in the neon tetra.** *Pigment Cell Res* 1989, **2**:485–492.
66. Cardona A, Saalfeld S, Schindelin J, Arganda-Carreras I, Preibisch S, Longair M, Tomancak P, Hartenstein V, Douglas RJ: **TrakEM2 software for neural circuit reconstruction.** *Plos One* 2012, **7**(6):7.
67. Saalfeld S, Fetter R, Cardona A, Tomancak P: **Elastic volume reconstruction from series of ultra-thin microscopy sections.** *Nat Methods* 2012, **9**:717. U280.

doi:10.1186/1742-9994-11-1

Cite this article as: Wucherer and Michiels: Regulation of red fluorescent light emission in a cryptic marine fish. *Frontiers in Zoology* 2014 11:1.

Submit your next manuscript to BioMed Central and take full advantage of:

- Convenient online submission
- Thorough peer review
- No space constraints or color figure charges
- Immediate publication on acceptance
- Inclusion in PubMed, CAS, Scopus and Google Scholar
- Research which is freely available for redistribution

Submit your manuscript at  
www.biomedcentral.com/submit

